



OPTICAL EQUIPMENT CATALOGUE 2026/27

SERVICES

- 🕒 Instruments
- 🕒 Equipment
- 🕒 Testing Room Set-up
- 🕒 Equipment Training
- 🕒 Equipment Servicing



OPTIPRO CONTENTS

Optipro Introduction	186
TESTING ROOM EQUIPMENT	187-221
Chair & Stands	187-191
Slit Lamp	192
Manual Phoropter Heads	193
Automatic Phoropter Heads	194-196
Stand Projector	197
Cyber X Chart Vision Check	198
Lucid LC LCD Chart	199
Lucid KR Auto Ker-Refractometer	200-201
Lucid AI M80 Vision Screener	202-203
Hand Portable Fundus Camera	204
Precicam Automatic Fundus Camera	205-206
Epsilon Accutone Portable Tonometer	207
Epsilon Goldmann Applanation Tonometer	208
Retinoscope With Ophthalmoscope Head	209
Optipro Low Vision Instruments	210-214
Trial Frames	215
Trial Lens Set	215
Dr Stools with & without back rest	216
Cross Cylinder Sets & Individual Cross Cylinders	216
Motorised tables for Instruments	217
Lensmeters	218
Epsilon Manual Lensmeter Vert	219
Epsilon Nano Auto Lensmeter	219
Epsilon Auto Lensmeter Vert	220
Screwdriver set	221
Lens Dye Packet	221
OPTICAL LAB CONSUMABLES	222-227
Edging/ Blocking Pad AntiSlip Pads	223
Surface Saver Tape For Alloy/Wax	224
Alloy & Wax Blocking Compound	225
Lens Polish	226
Tungsten Drill Bits Set	227
File Set	227
Reamer Set	227
OPTICAL LENSES	228
OPTICAL LAB INSTRUMENTS & EQUIPMENT	229-244
Gauges	229-231
Three Hole Drill	232
Former/ Pattern Cutter	232
Blocker	233
Pattern Automatic Lens Edger	233
Hand Edger	233
Frame Heater	234
Ultrasonic Cleaners	234
Lens Polisher	234
Lens Groover	234
Lens Driller	235
UV Tester	235

CONTENTS

CONTINUED...

OPTICAL LAB INSTRUMENTS & EQUIPMENT

3G Digital Lens Auto Drilling Machine	237
Changable Lens Tester	238
Tinting bath, Container & Tining bath rods	238
Unicos Edger UPE - 900 Edger	239
Unicos Tracer UPT - 900 Tracer	240
Unicos UPB - 900 Lens Blockers	240
Takubomatic Patternless Edgers, Tracers & Lens Blockers	241-245

230-245

OPTICAL LENS GENERATING MACHINES

Axis Markers & Blockers	247
Alloy Blockers	248
Alloy De Blockers	248
Lens Preparation Units	249
Lens Marking Units	250
Lens Generator	251
Lens Surfacing	251
Polish Tanks	251
Tool Rack	252
Smoother & Polisher	252
Hard Coating Machines	253-254
Coburn Lens Surfacing Machines	255-270

246-271

247
248
248
249
250
251
251
251
252
252
253-254
255-270

CONTENTS



WELCOME TO



ABOUT US



OptiPro specialises in a comprehensive range of optical instruments, equipment, spares, and consumables. We also supply high quality pre-owned instruments and equipment, offering cost-effective solutions without compromising on performance.

Our team of qualified professionals are equipped to handle all your optical requirements. We provide sales, servicing, and support for optical instruments and equipment across the Southern African region.

In addition, we offer an extensive selection of spares and accessories essential for maintenance and repairs. For more information about any of our products, please contact us on 079 381 9567 or visit our website at www.optipromedical.com

PBP

**PRICE BEAT
POLICY!**

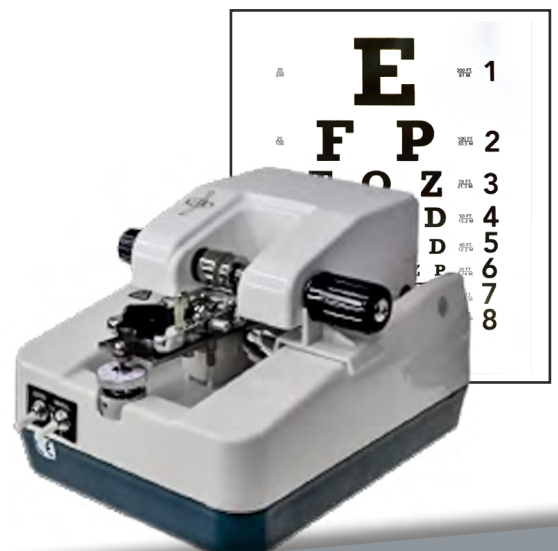
We will beat any price guaranteed if the product is of the same quality and style

CONTACT US!



Please contact us if you require any additional information about our instruments and equipment.

Email: fahad@optipromedical.com
Cell: +27 79 381 9567

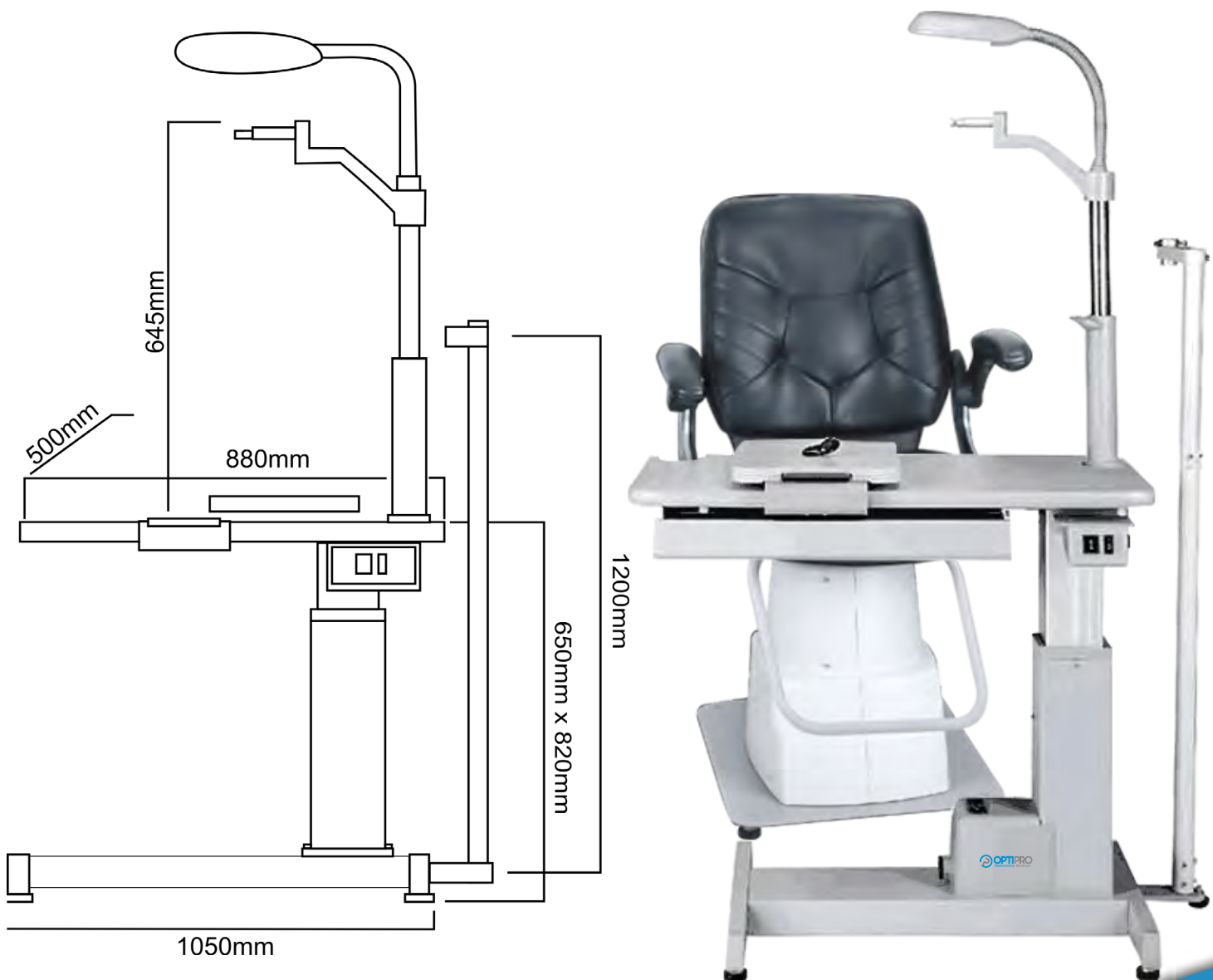


Chair & Stands

MODEL: OPT - C180 Chair and Stand (Budget Range)

SPECIFICATIONS

- Table Size: 880 x 500mm
- Arm up and down range: 170mm
- Chair up & down range: 150mm
- Light: 20W
- Voltage: AC110V / 220 (60 / 50Hz)
- Power: 120W
- Unit Size: 880 x 600 x 710mm
- Weight: 59kg
- Table rotational angle: 90°
- Chair loading capacity: 120kgs
- Phoropters arm adjustable
- Slide-able small table
- Height adjustable chair



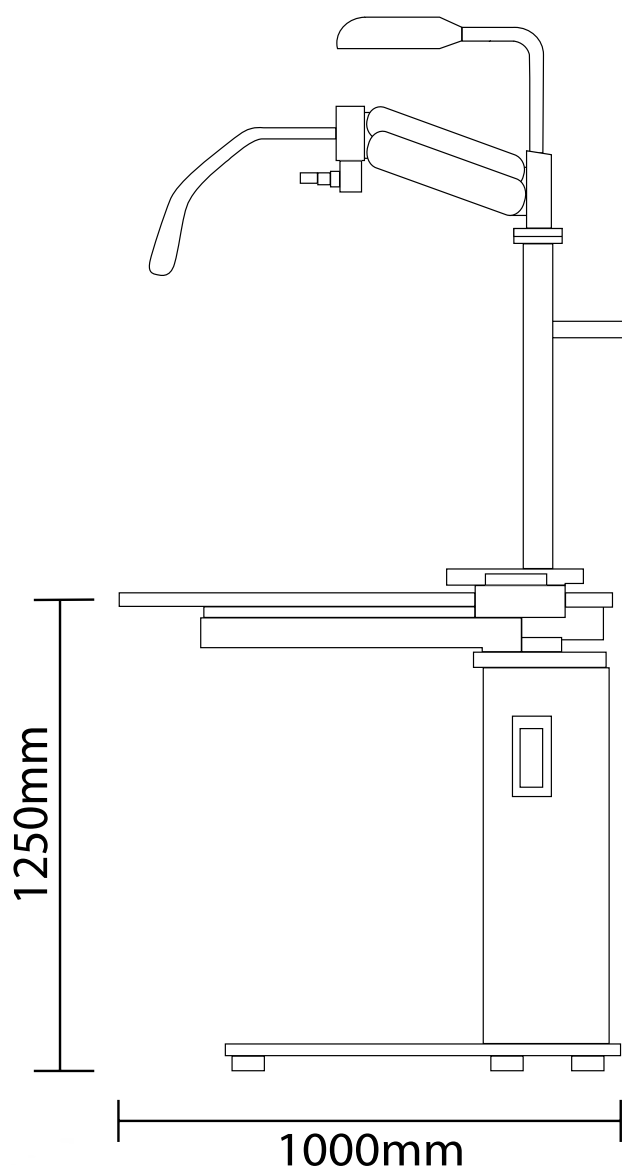


Chair & Stands

MODEL: OPT - 880 Chair and Stand (Econo Range)

SPECIFICATIONS

- Table Size: 420 x 1000mm
- Drawer Size: 560 x 380mm
- Arm up and down range: 280mm
- Chair up & down range: 170mm
- Light: 27W
- Voltage: AC110V / 220 (60 / 50Hz)
- Power: 120W
- Unit Size: 1000 x 1100 x 1950mm
- Weight: 157kg
- Table rotational angle: 90°
- Loading for chair: 150kgs
- Phoropters arm adjustable
- Slideable small table
- Drawer for trial lens set
- Motorized Chair



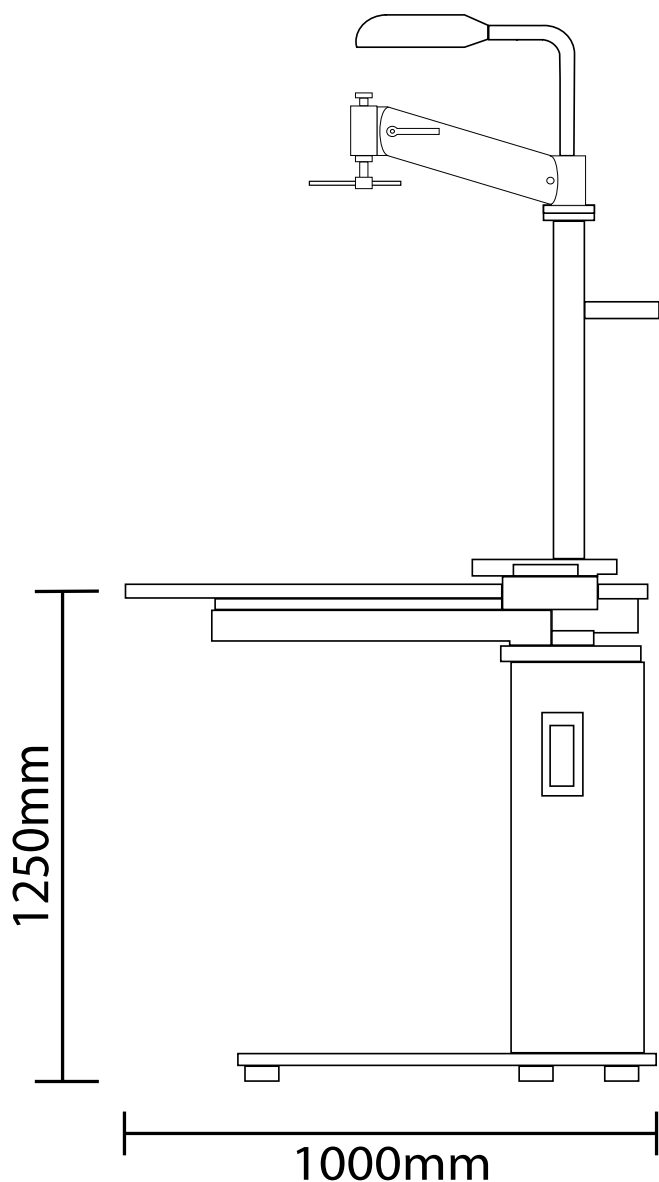
- Instruments attached on the OPT 880 that appear in the pictures are not included.

Chair & Stands

MODEL: OPT - S 550 Chair and Stand (Mid Range)

SPECIFICATIONS

- Table Size: 420 x 1000mm
- Drawer Size: 560 x 380mm
- Arm up and down range: 280mm
- Chair up & down range: 170mm
- Light: 27W
- Voltage: AC110V / 220 (60 / 50Hz)
- Power: 120W
- Unit Size: 1000 x 1100 x 1950mm
- Weight: 157kg
- Table rotational angle: 90°
- Loading chair capacity: 150kgs
- Phoropters arm adjustable
- Slide-able small table
- Drawer for trial lens set
- Height adjustable chair



- Instruments attached on the OPT - S550 that appear in the pictures are not included.



Chair & Stands

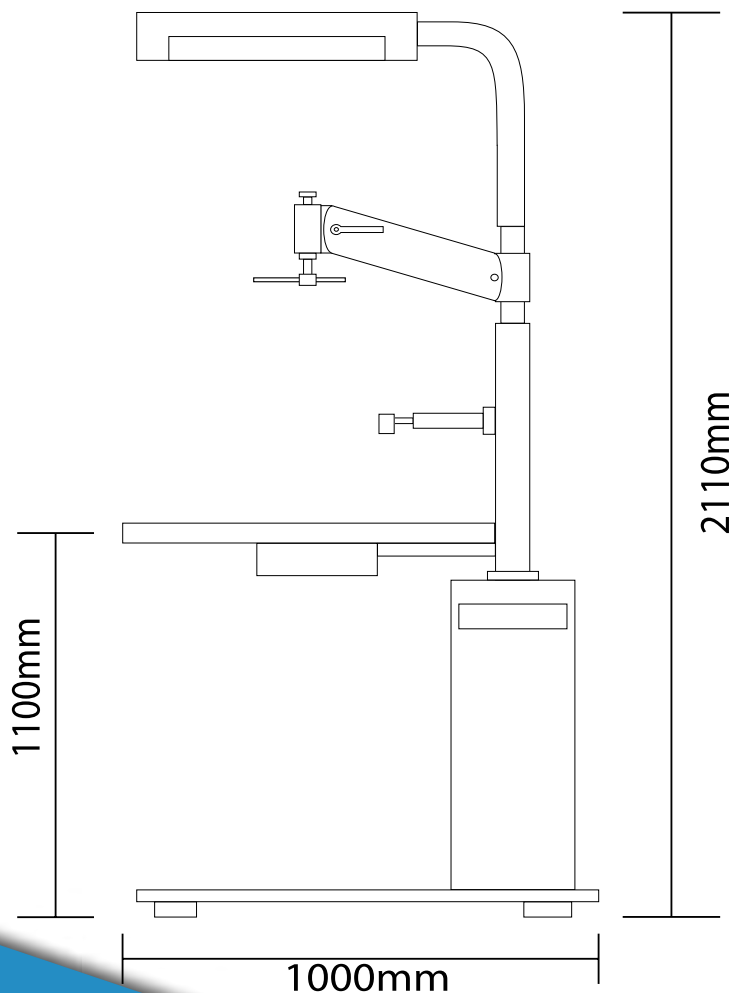
MODEL: OPT - TR 500A Chair and Stand (Premium)

ELECTRICAL PARAMETERS

- Input voltage: 110V / 220V AC, 50Hz ~ 60Hz
- Engine power: 55W 24V DC
- Light luminaire: 40W 110V / 220V AV
- Fuse: 5A 250V AC
- Power without load: 1W
- Pressure test: 2KV
- Main wire: 10A 250V
- Working mode: S1
- Working temperature: -30° ~ $\pm 50^{\circ}$
- Relative humidity: less than 90%
- Force of pressing key: 1 ~ 5N
- Cooling mode: Nature cooling
- Installation Dimension
- Figure size: 1100 × 1000 × 2110mm

MECHANICAL PARAMETERS

- Up / Down angle of swing arm: $\pm 30^{\circ}$
- Table size: 840 × 405mm
- Table rotational angle: 90°
- Table sliding movement: 330mm
- Angle of rotation for chair: $\pm 60^{\circ}$
- Height adjustable chair: 150 ~ 200mm
- Loading chair capacity: 70 ~ 150kgs
- Lifting height for pillow: +150 mm
- Backrest obliquity: 90° ~ 135° or 140°



- Instruments attached on the OPT - TR500 that appear in the pictures are not included.

Chair & Stands

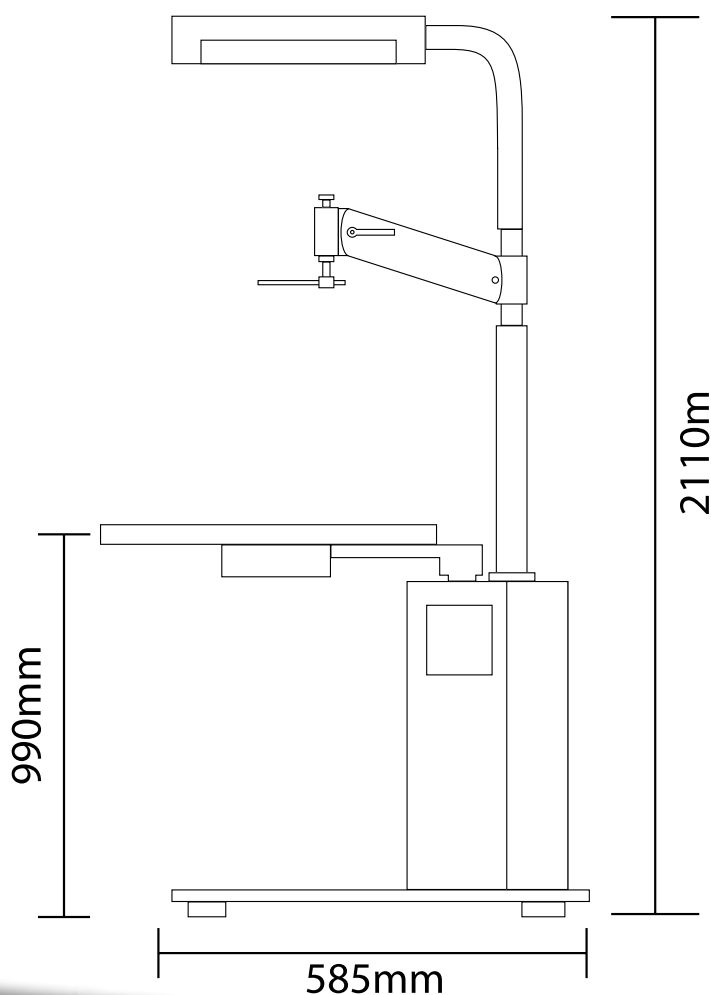
MODEL: OPT - TR 520B Chair and Stand (Platinum)

ELECTRICAL PARAMETERS

- Input voltage: 110V / 220V AC 50Hz ~ 60Hz
- Engine power: 55W 220V DC
- Light luminaire: simple 16W, double 36W 110V / 220V AV
- Fuse: 5A 250V AC
- Power without load: 1W
- Pressure test: 2KV
- Main wire: 10A 250V
- Working mode: S1
- Working temperature: -30° ~ $+50^{\circ}$
- Relative humidity: less than 90%
- Force of pressing key: 1 ~ 5N

MECHANICAL PARAMETERS

- Up / Down angle of swing arm: $\pm 30^{\circ}$
- Table size: 670 × 400 mm (TR - 520C)
- Table rotational angle: 90°
- Lifting height for chair: 150 ~ 200mm
- Loading capacity 150kgs



- Installation Dimension
Figure size: 990 × 585 × 2110mm
Weight: 120kgs



Slit Lamp

MODEL: SL880 Slit lamp

SPECIFICATIONS

- Microscope Type: Galilean Stereoscopic Microscope
- Objective Magnification: 3 step drum rotation
- Eye Piece: 12.5x
- Total Magnification & Field of View (mm): 10 x (22.5), 16 x (14), 25 x (8.8mm)
- Range of Pupil Distance (mm): 50 ~ 82mm
- Diopter Adjustment: -7D ~ +7D
- Side Shift: 110mm
- Depth Shift: 90mm - Base
- Height Shift: 30mm - Base
- Height Shift: 80mm - Chin Rest
- Fixation Target: Red LED
- Slit Width (mm): 0mm ~ 14mm Continuous
- Slit Height (mm): 1mm ~ 14mm Continuous
- Slit Angle: 0° ~ 180° adjustable
- Slit Inclination: 5°, 10°, 15°, 20°
- Diameter of Light Spot (mm): 1mm ~ 14mm Continuous
- Filter: Heat Absorption, Grey, Red Free, Cobalt Blue
- Illumination Type Taking Picture: Background illumination
- Input Voltage/Frequency: AC220V ± 22V; AC110V ± 11V
- Electrical Safety Standard: Executive Standard IEC601 - 1, Class 1, Type B
- Collecting Medium: Digital Single Lens Reflex



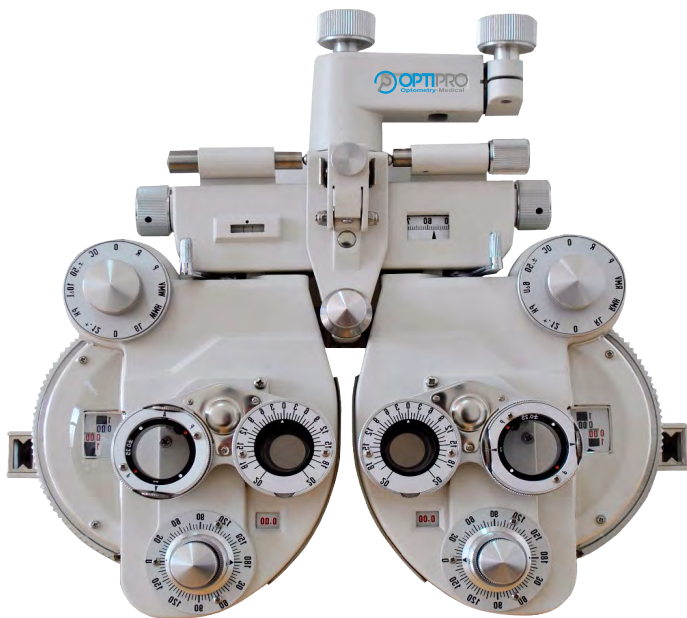
- Table that appears attached to the SL880 Slit Lamp, is not included

Manual Phoropter Heads

MODEL: OPT - VT8 Phoropter Head (AR Coated Lenses)

SPECIFICATIONS

- Sphere Range: +16.75m - 1 ~ 19.00
- Sphere Step: 0.25m - 1, 3.00 m-1
- Cylinder Step: 0.00 ~ - 6.00m -1 (Measuring Range with Accessories 0.00 ~ - 8.00m - 1)
- Cylinder Range: 0.25 m-1
- Cylinder Axial Range: 0 ~180°
- Cylinder Axial Step: 5°
- Cross Cylinder: ±25m - 1
- Rotating Prism Range: 0 Δ ~ 20 Δ
- Rotating Prism Step: 1 Δ
- Auxiliary Lens: (RMV), (RMH), (WMV), (WMH) - (RL)
- Distance of Optical Centre: Range: 50 ~ 75mm - Step: 1mm
- Sight Switch Range: ∞ ~ 380mm - Distance of Optical center is 64mm
- Front Chin Rest Range: 0 - 16mm
- Distance from Cornea: 16mm
- Standard Accessories Lens: Two pieces of Auxiliary Cylinder - 2.00m - 1 and 0.12m - 1 respectively
- Standard Accessories: Two pieces of Myopia Standard Card, One piece of Standard Card Holder.
- Size: 388 x 99 x 292mm
- Net Weight: 5kg



Front



Back

Automatic Phoropter Heads MODEL: OPT - VT100 Phoropter Head

COMPREHENSIVE REFRACTOMETER

- Elegant design
- Multiple independent visual function test
- 3.00D adjustment available with the sphere fast rotating disk
- The unique cross cylinder design improving the convenience and flexibility
- Easy to measure near visual acuity
- Optional tablet available

MEASURING RANGE

- Sphere: -29.00~ +26.75d (step: 0.25D / 0.5D / 0.75D / 1.00D)
- Cylinder: 0.00 ~ 8.75D / 0.5D / 1D / 2D / 3D)
- PD: Far: 48 ~ 80 mm
- Close: 45 ~ 75 mm (step: 0.5 / 1.0 mm)
- Working distance: 35 ~ 70cm (step: 5cm)
- Prism: 0~ 20 Δ (step:0.1 Δ / 0.2 Δ / 0.5 Δ / 1 Δ / 2 Δ)
- Jackson Cross Cylinder: Jackson cross cylinder 0.25D
- Jackson cross cylinder 0.5D
- 0.25D dual Cross Cylinder (separation prism)
- Ophthalmoscope:
- 1.5D, + 2.0D (measuring distance 67cm, 50 cm)

SIZE AND WEIGHT

- Weight: 447 x 130 x 288mm, 6.5kg
- Keyboard: 214 x 215 x 187mm, 1.0kg
- Junction Box: 266 x 72 x 240mm, 1.0kg
- Power: AC100 ~ 240V, 50 / 60Hz
- Total Power; 140VA
- Auxiliary Lenses
- Pinhole Lens: 1mm
- Maddox: Right (red / horizon), Left (red / vertical)
- Red and Green Lens: Right (red), Left (green)
- Polaroid: Right (130°, 45°), Left (45°, 135°)
- Separation prism: Right (6 Δ BU), Left (10 Δ BI)



Automatic Phoropter Heads MODEL: OPT - VT 700 Phoropter Head

COMPREHENSIVE REFRACTOMETER

- The 180° rotating screen providing the direct communicating with customers Various near visual and facilitating icons built in
- Abundant online functions
- Elegant with exquisite workmanship
- More accurate measurement
- True Colour touch screen
- Optional tablet available
- Sphere: - 29.00 ~ + 26.75D (step: 0.12D / 0.25D / 0.5D / 1D / 2D / 3D)
- Cylinder: 0.00 ~ 8.75D (step: 0.25D / 0.5D / 1D / 2D / 3D)
- Cylinder axis: 0 ~ 180° (step: 1 / 5 / 15 / 30 / 45°)
- PD: Far: 48 ~ 80mm Near: 45 ~ 75mm (step: 0.5 / 1.0 mm)
- Working distance: 35 ~ 70cm (step: 5cm)
- Prism: 0 ~ 20Δ (step: 0.1Δ / 0.2Δ / 0.5Δ / 1Δ / 2Δ)
- Jackson Cross Cylinder: Jackson cross cylinder 0.25D Jackson cross cylinder 0.5D
- Dual Cross Cylinder (separation prism)
- Ophthalmoscope: 1.5D, + 2.0D (measuring distance 67cm, 50cm)
- Size and weight
- Body of main engine: 362 x 83 x 299mm, 3.5kg
- Keyboard: 215 x 230 x 226mm, 1.5kg
- Junction box: 266 x 72 x 240mm, 1.3kg
- Voltage: AC 100 ~ 240V, 50 / 60HZ
- Power: 90VA
- Auxiliary Lenses
- Pinhole lens
- Maddox: Right eye (horizon), Left (vertical)
- Red and Green Lens Right eye (red), Left eye (green)
- Polaroid: Right eye (135°, 45°), Left eye (45°, 135°)
- Separation prism: Right eye (6ΔBU), Left eye (10ΔBI)
- Solid suprachiasmatic cylinder: Jackson cross cylinder 0.25D, Axis fixation 90°
- Visual degree: 32°





Automatic Phoropter Heads MODEL: LUCID DAV-31P

SPECIFICATIONS

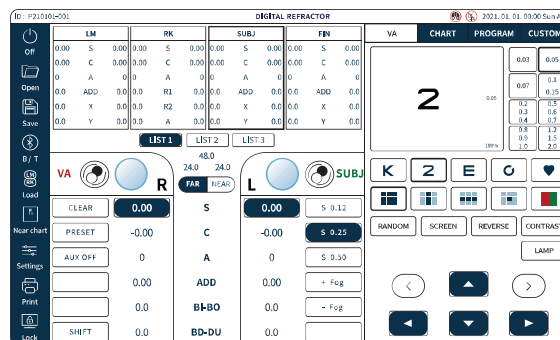
- Spherical Lens - 29.00 +26.75D (Regular) -19.00 +16.75D (During XC or Prism Tests)(0.12/0.25/0.5/1/2/3D increments)
- Cylinder Lens 0.00±8.75D (0.25/0.5/1/2/3D increments)
- Cylinder Axis - 1180 degree (1/5/15 increments)
- PD - 4880mm (0.5/1 mm increments) Near PD: 50-74mm Near Working Distance: 35-70cm
- Rotary Prism Lens 0-20 (0.1/0.2/0.5/1/2 increments)
- Cross Cylinder ±0,25D ±0.50D ±0.25D Split Lens (Dual Cross Cylinder)
- Retinoscopic Lens +1.5D, +2.0D (Measurement Distance 67cm, 50cm)

AUXILIARY LENSES

- Occluding Aperture - Pinhole Lens 2mm
- Maddox Rod Right Eye (Red, Horizontal), Left Eye (Red, Vertical)
- Red/Green Filter Right Eye (Red), Left Eye (Green) Polarizing Filter Right Eye (135, 45 degree), Left Eye (45, 135 degree)
- Split (Dissociation) Prism Right Eye (6A BU) Left Eye (10A BI / up to 5A complement)

PD ALIGNMENT LENS

- Fixed XC Lens ±0.50D, with the axis fixed at 90degree
- Visual Field 40 degree (VD=12mm)



Stand Projector MODEL: OPT -NH 500LED

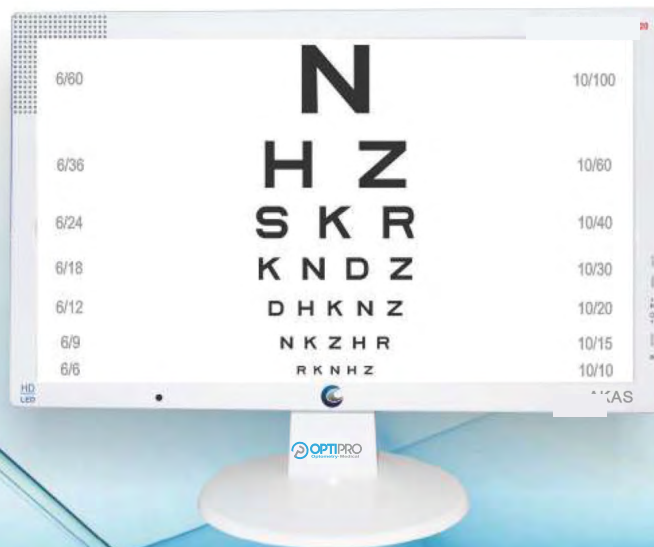
SPECIFICATIONS

- Chart Selection Speed: Average 0.3 sec
- Filter: Red / Green
- Projection Distance: 2.0 - 0.7m (5mm is standard)
- Projection Magnification: 30 x at 5m
- Projection Size: 252 and 330 x 225 mm [at 5m]
- Tilt Angle: Ball Joint (10 degrees)
- Lamp: 6V 20W (Halogen), 2000 hrs lifetime
- Power Source: AC 220 - 240V 50 / 60Hz
- Power Consumption: 50VA
- Auto- Off Function: 5 -10 minutes after
- Dimensions: 265 x 230 x 360mm
- Net Weight: 6kg
- Accessories: 1 polarized metal screen, 2 spare Fuses & 2 Batteries (AAA).
- Optional Accessories: Table Stand wall Bracket, Floor Stand, Red / Green glasses.





Cyber X VA LED Chart



SALIENT FEATURES

The Cyber X Chart is maintenance free & offers numerous advantages over conventional chart projectors & other available visual acuity systems

- ▶ Smart charts with random display function for all optotypes
- ▶ 1% Contrast sensitivity adjustment for all optotypes
- ▶ Adaptable to smaller rooms with precise adjustment of distance
- ▶ External USB port for viewing your own images and videos
- ▶ 2 Min. Speedy refraction using the 4 navigation keys
- ▶ 160+ Patient education charts for various eye diseases
- ▶ 60+ HD Patient education videos for educating the patients
- ▶ Extensive display modes for optotypes
- ▶ Reverse mode for all charts
- ▶ External 3.5mm audio jack for audio out
- ▶ Compensation for red green filter
- ▶ Feather touch remote control with direct commands for all tests.
- ▶ No moving parts

Standard Tests

Snellen
Logmar
Ishihara (38 plates)
Maddox
Worth Four Dots
Astigmatism
Contrast sensitivity
Duochrome
Cross Cylinder

Optotypes

Sloan Letters
Numbers
Tumbling E
Landolt Rings
Figures for Children

Display modes

Single character
Single line
Single Column
Black in white
Multi Line

Technical Specifications

LCD type	:	22" LED Display
Luminance	:	200 cd/m ²
Remote Control	:	Infrared
Working distance	:	2.5 m ~ 6 m
Connections	:	Audio, USB
Power Requirements	:	110-230 VAC, 50/60Hz
Power Consumption	:	35W
Unit Weight	:	4.2 kg
Gross weight	:	4.4 kg
Unit Dimensions	:	52.5 x 33 x 6.5 cm
Package Dimensions	:	58.5 x 42 x 14.0cm

Lucid 'LC VA LCD Chart

LUCID`LC

LCD CHART



Specifications

Display	24 inch WUXGA TFT LCD (1920 x 1200 pixels)
Active display area	(W)518.4 x (H)324.0mm
Brightness	Max 300 cd/m ²
Measuring distance	2.0 ~ 6.0m (0.25m step)
Processor	Amlogic S905 Soc 4×ARM Cortex-A53 1.5 GHz 64bit ARMv8 Architecture@28nm 3×ARM Mali-450 MP 700MHz
Memory	SD Memory 8GB 90MB/s
Operating system (OS)	Google's Android
Power supply	DC 12V 5A
Control	Remote controller or Serial communication
Multi-control channel	Max 5 channels
External interface	4x USB, 1x RS-232, 1x Ethernet (10/100)
Standard Accessory	Wall mount bracket
Optional Accessory	Floor stand, Red/Green glasses, Wi-Fi module
Dimension & weight	(W)568 x (H)372 x (D)54mm, Approx. 4.0kg



LUCID 'KR Auto Refractometer with Keratometer



Suitable Chin-rest & Head-rest

Head-rest
Silicon Rubber

Chin-rest
Silicon Rubber



LUCID'KR provides the patients with the comfortable measuring environment by adopting Chin-rest and Head-rest with soft material of silicon rubber

Easily recognizable ICON





The monitor screen enables operator to measure in comfortable position even when the patient's eyelid needs to be opened by operator.

Specifications

Measurement

Mode		
Conventional Mode	REF	Refractometer
	KER	Keratometer
	REF/KER	Refractometer with Keratometer
	CLBC	Contact-lens base curve measurement
Special Function	PK	Peripheral Keratometer
	ILLUM	Retro-illumination function
	SIZE	Cornea / Pupil size measurement
Refractometer	Sphere	-25.00 ~ +25.00D (VD 12mm) (0.01 / 0.12 / 0.25D Steps)
	Cylinder	0 ~ ±10D (0.01 / 0.12 / 0.25D Steps)
	Axis	1 ~ 180° (1° Step)
	Required minimum pupil	2.0mm
Keratometer	Radius curvature	5.00 ~ 10.00mm (0.01mm Step)
	Refractive power	67.50 ~ 33.75D (n=1.3375) (0.01 / 0.12 / 0.25D Steps)
	Astigmatism	0 ~ ±10D (0.01 / 0.12 / 0.25D Steps)
	Astigmatic axis	1 ~ 180° (1° Step)
	Peripheral measurement	6.0mm (r=7.8)
PD	Maximum	88mm

General Specification

Size measurement	Cornea	0 ~ 12.9mm
	Pupil	0 ~ 12.9mm
Target chart	Auto fog system with scenery chart	
Display	Tiltable wide 7 inch TFT LCD with touch panel	
	Luminance 400cd/m ²	
	Resolution 800 x 480 Pixels	
Printer	Built in thermal printer with auto loading & auto cutter	
Interface	RS-232C (RX / TX), D-Sub (Video out)	
Dimension	270 x 520 x 455mm	
Weight	Approx. 18kg	
Power supply	AC 100-240V 50/60Hz	
Power Consumption	60W	



Lucid AI M80
Vision Screener

Lucid AI M80
Vision Screener



Used to screen the refractive status of children and adults over 6 months.

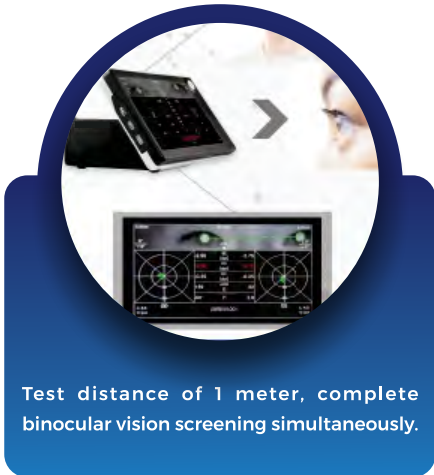


Lucid AI M80 Vision Screener

Lucid AI M80 Vision Screener



The 5.5-inch color touch LCD screen can quickly capture the pupil and complete the test within 1 second.



Test distance of 1 meter, complete binocular vision screening simultaneously.



The weight of the host is less than 800g and it is easy to carry.



Wide measuring range

Detect refractive abnormalities such as pupil sizes, anisometropia, strabismus amblyopia, etc.



Portable Data storage-Efficient

It supports 4G network and is equipped with multiple data transmission interfaces, which can realize large-scale continuous screening.



Long battery life, fast charging

Low-power design, large-capacity battery can realize 8 hours of continuous operation of the device, support QC3.0 fast charge.



AI (Artificial Intelligence)

The GPU parallel computer hardware architecture supports deep learning technology and seamlessly connects to third-party AI platforms.

Technical Parameter

Age Range	> 6 months child and adult
Measuring Distance	100cm Accuracy: +/-5cm
DS	Range: -7.50D~+7.50D Resolution: 0.25D Accuracy: ±0.50D
DC	Range: 0~3.00D Resolution: 0.25D Accuracy: ±0.50D
Axis	Range: 0° ~ 180° Resolution: 1° Accuracy: ±5°
Pupil Size	Range: 4.0mm ~9.00mm Resolution: 0.1mm Accuracy: ±5°
Pupil Distance	Range: 35mm~80mm Resolution: 0.1mm, Accuracy: ±1mm
Time Per measurement	< 0.55 sec.
Data Transmission	USB3.0, WIFI, Bluetooth, SD, HDMI, Type-C
Display screen	5.7 Inch touch screen
Usage Time	> 8 Hours
Charging Time	< 3 Hours
Net Weight	< 800g



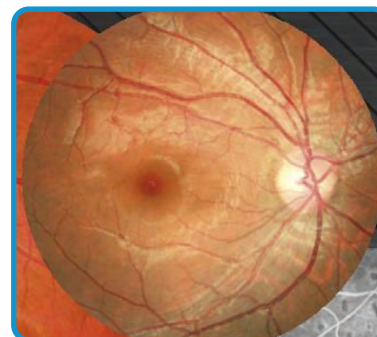
Portable Fundus Camera MODEL: OPT - Fundus Camera HFC

SPECIFICATIONS

- FOV: 40°
- Minimum Pupil: 2.5mm
- Refractive Compensation: -20D ~ +20D
- Focus Mode: Manual
- Image Resolution: 1920 x 1080 px
- Screen: 3.5
- Power: ≤6VA
- Image Format: JPEG (Photograph) AVI
- Light Source: White LED / IR
- Storage: Micro SD Card
- Power Supply: 3.7V Lithium Battery
- Interface: Mini USB / Wi-fi
- Size: 160 x 90 x 190mm
- Weight: 450g (Typical)

OTHER:

- Images real time display
- Magnification x2
- Movable & Portable
- Light weight
- Rechargeable battery provides 4 hours of continuous operation



Stand is optional for Portable Fundus Camera



Optional Fitting for Slit Lamp



Front View



Side View



Automatic Fundus Camera

MODEL: AT300 Pericam Non Mydriatic Retinal Camera

AT3100

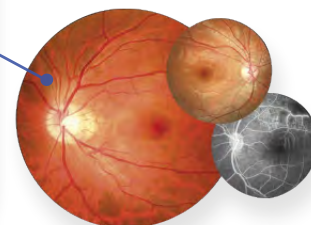
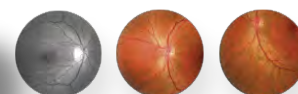
NON MYDRIATIC
RETINAL CAMERA



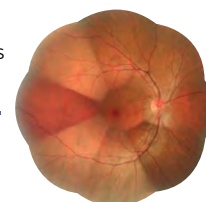
24 MP X SENSOR
CAMERA



PRECICAM
AUTOMATIC FUNDUS CAMERA



- Easy to capture
- Fully featured non-mydriatic colour camera
- Small pupil mode enables the fundus image to be used for pupils as small as 3.3mm
- 135° wide field, mosaic with countless fixation points.

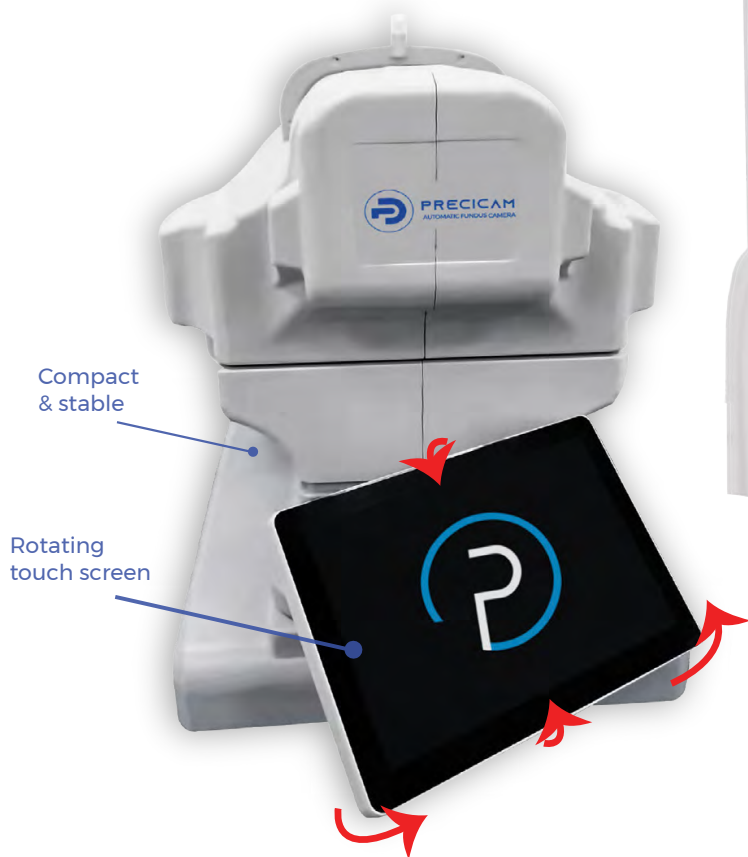


Features

- **Brilliant Picture Quality & Display** with rotating touch screen.
- Easy to capture with intelligent software for early diagnosis.
- **Ergonomically designed** for patient /doctor comfort.
- Compact design for better space saving & can fit in corners.
- **Mosaic Design Software** getting the best from all the images.
- Multi functional imaging system that adjusts brightness, gamma, contrast and RGB.
- **Fully automatic dual camera system** with a single click feature.
- **Small pupil** and soft lighting mode.
- **Connectivity: USB, LAN** (Local area network), archiving, shared folder system.



Automatic Fundus Camera MODEL: AT300



Fully Automatic Dual Camera System

- Searches for pupil
- Adjusts chin rest
- Auto focuses
- Auto shoots

**with a
single click**

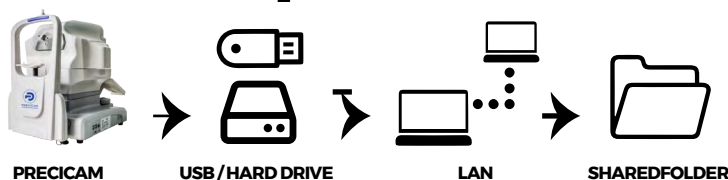


Image acquisition system specification

Acquisition modes	non-mydratric / mydratric
Field of view	50°
Working distance	35 mm
Minimum pupil size	_3.3 mm
Focus modes	Auto / manual
Exposure modes	Auto / manual
Operation	Auto / manual
Photography	SLR camera
Diopter compensation	24 megapixels (±25D)
Fixation	external fixation / internal fixation
Auto-focus assist light	Infrared LED
DICOM 3.0	yes
Customization AI port	yes

Epsilon Accutone Portable Tonometer Model: EPT800

Opti Pro Non Contact Rebound Tonometer OPT - 500: With vertical and horizontal two working modes, wireless output data.

The equipment is used to measure intraocular pressure, using the principle of: the probe hits the surfaces of different hardness at a certain speed, has different reaction when the probe rebounds. Be of advantages of high accuracy, portable, without anaesthesia, without the cross - infection etc.



Hard Case



SPECIFICATIONS

- Measuring Range: 3mm Hg~ 70mm Hg;
- Measuring Error:
 $\pm 1.5\text{mmHg}$ (25mm Hg< Intraocular pressure \leq 25mm Hg);
 $\pm 2.5\text{mmHg}$ (25mm Hg< Intraocular pressure \leq 70mm Hg);
- Measurement can go along both in standing and lying posture;
- Wireless data printing
- Easy to learn, easy to use
- Lightweight and handy
- No anaesthesia, avoiding discomfort reaction.





Epsilon Goldmann Applanation Tonometer Model: EAT500

The Goldmann Applanation Tonometer is a device used to measure intraocular pressure (IOP) by determining the force needed to flatten a specific area of the cornea, and is considered the gold standard for IOP measurement, due to its accuracy and excellent reproducibility.

Measuring Range	0-10. 64kpa
Movement of light circle	1.53 x 2 = 3.06mm
Diameter of probe	7mm
Moving range of Probe	3mm
With slit lamps	serials of 66 and others with suspension arm interface
Weight	300g
Size	90 x 80 x 80mm

SPECIFICATIONS

1. Measurement under slit lamp microscope can have two effects: Inspect the eye and measure the intraocular pressure.
2. Numerical value is precise. The tonometer's own error is only 0.066Kpa.
3. Get numerical value of IOP directly. No need to look up tables or do matrixing. And $P_t = 'P'$, i.e. $IgP_t - IgP_0 = 0.56k$, normal $k = 0.0215$, then: $P_t : P_0 = 1.0281$. So P_t adds 2.8% comparing with P_0 .
4. The hardness of sclera does not affects the numerical value. Change of the volume of eyeball is only $0.56mm^3$.
5. Combine with the measurement method of Schiotz tonometer, couting the hardness of sclera can be done.
6. The measuring pressure can be calibrated to guarantee the stability over a long period of time and reliability of measurement.



Retinoscope with Ophthalmoscope Head

MODEL: OPT - YZ24B Retinoscope with Ophthalmoscope Head

FEATURES:

- The filament can be rotated 360 and move upward and downward.
- Quickly and precisely measures the astigmatism axis
- The light can be converged, radiated and paralleled
- Continuously adjustable brightness
- Convenient quick recharging
- Anti - recharging and anti - discharging function protects the battery.
- Can be connected with the head of ophthalmoscope

SPECIFICATIONS:

- Working Distance: 0.67m
- Streak: 3 - 20mm
- Illumination Source: 3.5V / 2.8W Halogen Bulb
- Streak Rotation: 360
- Input Voltage: AC220V± 22V/ 50Hz± 1Hz
AC110V± 11V / 60Hz± 1Hz
- Power (Main Body) of Ophthalmoscope:
Li + battery pack DC: 3.7V



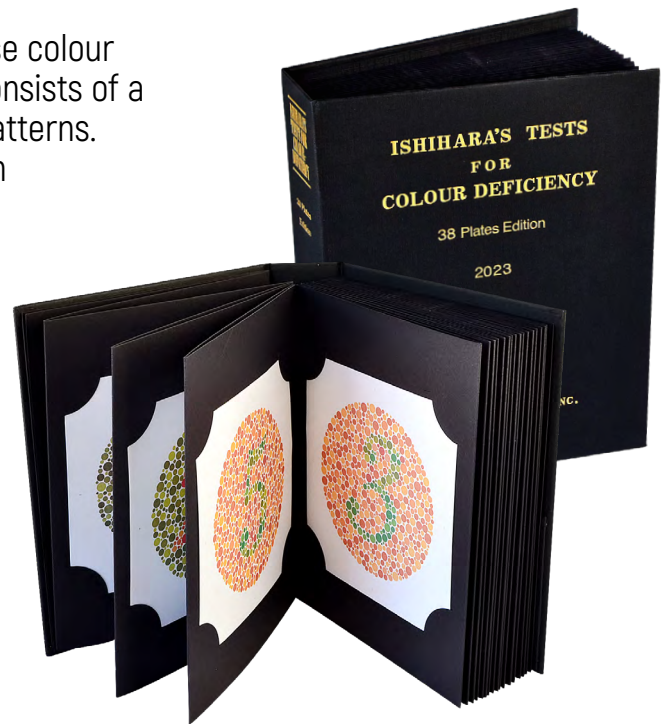


Low Vision Instruments

Ishihara Colour Test Book - 38 plates

The Ishihara Test is a colour vision test used to diagnose colour blindness, particularly red-green colour blindness. It consists of a series of plates filled with coloured dots arranged in patterns.

- **Purpose:** Detects congenital red-green colour vision deficiencies.
- **Format:** 38 full-colour pseudo-isochromatic plates.
- **Plate Size:** Approx. 14 cm × 20 cm (varies by manufacturer).
- **Material:** High-quality coated card with non reflective finish.
- **Printing:** Precision colour reproduction for accurate testing.
- **Binding:** Durable hardcover with protective coating.
- **Usage:** Suitable for clinical, occupational, and educational vision screening.
- **Standards:** Widely recognised and clinically validated worldwide.



Stereo Fly Test

The Stereo Fly Test assesses depth perception using 3D flying images, viewed with polarized glasses.

- Measures stereopsis (depth perception)
- Large fly target for gross stereopsis screening
- Includes graded circle targets for fine stereopsis (800–40 seconds of arc)
- Targets for both adults and children
- Polarized glasses included
- Durable, easy-to-clean booklet format



Randot Stereo Test

The Randot Stereo Test measures depth perception using random dot patterns to prevent monocular cues, with graded targets from 500 to 20 seconds of arc. It includes both circle targets for adults and animal targets for children, comes with polarized glasses, and is presented in a durable, easy to clean booklet format.





Low Vision Instruments

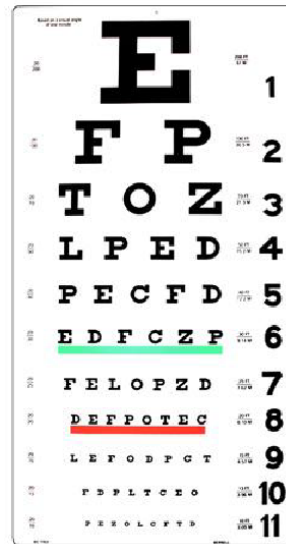
Pocket Universal Laminated Chart

- Compact, pocket-sized format for portability
- Durable laminated surface for long-term use
- Waterproof and easy to clean
- Printed with clear, high-contrast text and symbols
- Covers multiple reference scales or measurements
- Resistant to fading and wear
- Rounded edges for safe handling

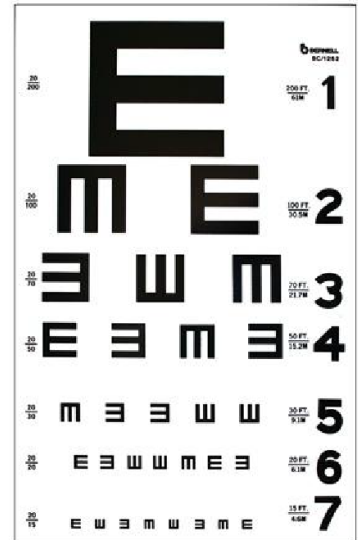


Snellen Chart: Literate/ Illiterate

- **Type:** Visual acuity testing chart for literate and illiterate patients
- **Design:**
 - **Literate:** Rows of capital letters (optotypes) in decreasing size
 - **Illiterate:** Rows of tumbling "E" or Landolt C symbols in varying orientations
- **Material:** Laminated or non-reflective cardboard/plastic for durability
- **Size:** Standard 560 × 280mm (varies by model)
- **Testing Distance:** Typically 6 meters
- **Optotype Size Progression:** Gradually decreasing from top to bottom
- **Markings:** Visual acuity values (e.g., 6/60 to 6/6) printed alongside rows



Snellen Literate Chart



Snellen illiterate Chart

Polarized Hand Coding Chart

- Tests depth perception (stereopsis).
- Hand-held and portable.
- Laminated for durability.
- Works with polarized glasses.
- Features coded symbols or shapes.





Low Vision Instruments

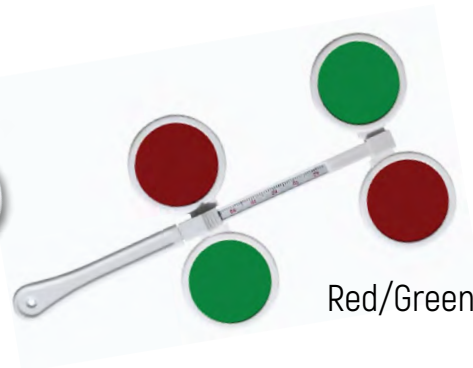
PD Ruler

0-15cm PD Ruler



Flipper

Scripted Flipper ± 2.00
Assorted scripts as well



Red/Green Flipper

Occluder

Occluder Set



Individual Occluder

Prism Bar Set

- **Includes:**
 - Horizontal Prism Bar
 - Vertical Prism Bar
- **Range:** 1 to 20 prism diopters





Low Vision Instruments Confirmation Bar

A confirmation bar is a tool used for fine tuning vision correction during subjective refraction.

- **Material:** Durable optical-grade glass or acrylic
- **Purpose:** Verifies prism diopter measurements
- **Design:** Smooth, precise increments



Near Point Rotary Reading Point

A Rotary Reading Card is a tool used to assess visual acuity and eye coordination. It features rotating letters or symbols that move in a circular motion, helping to test eye tracking and focus ability.



Retinoscopy Racks

Retinoscopy racks hold lenses used in refractive tests to measure vision errors and determine the correct prescription for glasses or contacts.

- **Material:** Durable, lightweight metal or plastic
- **Purpose:** Holds trial lenses for retinoscopy and refraction
- **Design:** Organized, easy-to-access slots
- **Features:** Smooth movement; clear lens markings; compact for easy handling



Wolff Ball, Gold and Silver

The Wolff Ball is a tool used in refraction tests, with gold for plus lenses (hyperopia) and silver for minus lenses (myopia), helping determine the correct prescription.

- Gold or Silver plated
- 5 mm diameter
- Lightweight & durable
- Corrosion-resistant



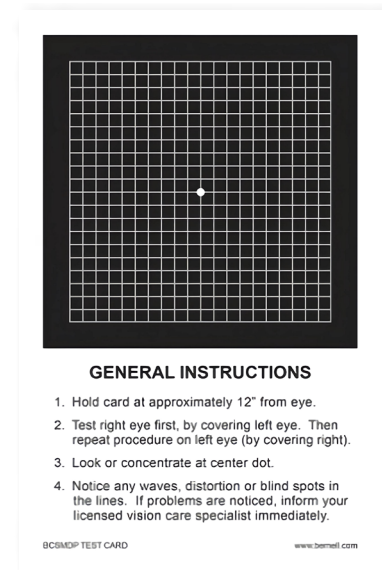


Low Vision Instruments

ARMD Test Pad

The ARMD Test Pad is used to assess Age-Related Macular Degeneration (ARMD) by testing central vision. It features a grid, often the Amsler grid, to help detect distortions or blind spots in vision, which are common in ARMD.

- **Design:** Grid pattern for central vision testing
- **Size:** Approximately 210 × 297 mm (A4 size)



Disposable Penlight Torch (White only)

A disposable penlight torch is a single-use, compact flashlight used in medical assessments to evaluate pupil reactions, visual acuity, and neurological function, particularly during eye and neurological examinations.

Power Source: Integrated batteries



Bernell lightweight Led penlight with pupil gauge (5 colours)

A portable, durable tool used in medical examinations. It features a built-in pupil gauge to measure pupil size and response to light, aiding in neurological assessments and eye exams. The LED light provides bright, focused illumination for accurate evaluations.

- **Type:** LED penlight with integrated pupil gauge
- **Material:** Durable plastic body
- **Power Source:** Replaceable or rechargeable batteries



Red Green Anaglyphs

3D glasses for viewing red-green anaglyph images and videos. Features a red filter for the left eye and green for the right, enabling classic 3D depth perception. Perfect for educational use, retro media, or stereoscopic viewing.

- **Lens Colors:** One red lens, one green lens
- **Material:** Lightweight, durable plastic frame
- **Fit:** One-size-fits-most, comfortable for extended use





Trial Frame MODEL: OPT - Trial Frame

Econo Trial Frame
Universal Trial Frame
Titanium Trial Frame

- Pupil Distance of both eyes: 48 - 80mm
- Left & Right Pupil Distance: 24 - 40mm
- Minimum Calibration value: 1mm
- Left Disc: 120° - 0° - 135°
- Right Disc: 45° - 180° - 60°
- Inner diameter of lens frame: 32,5mm



Paediatric Kids Trial Frame MODEL: OPT - Paediatric Kids Trial Frame

- 5 Piece Set
- PD Range: 52 - 70mm



Assorted Colours

Trial Lens Set MODEL: OPT - Trial Lens Set

- 155 pcs
- 202 pcs
- 266 pcs

- Trial Lenses and Case
- Consists of 266 piece lenses
- Aluminium Casing and Metal Rim





Dr Stools with & without Back Rest

Model: OPT - Y5B2 Stool with Back Rest

- Height Adjust Range: 480 - 600mm
- Seat Size: 40 x 40mm
- Size of back: 30 x 38mm



Model: OPT Y5C1 Stool without Back Rest

- Height adjust range: 480 - 600mm
- Seat Size: 40 x 40mm



Cross Cylinder Sets

Set of 2 includes

-0.25, -0.50



Set of 3 includes

-0.25, -0.50, -0.75



Set of 4 includes

-0.25, -0.50, -0.75, -1.00



Individual Cross Cylinders

Available in :

-0.25,-0.50,
-0.75 & -1.00



Motorized Tables for Instruments MODEL: OPT - WZ3A Electronic Table Series

SPECIFICATIONS

- Table Size: 580 x 400 x 640mm
- Table-Top up and down range: 180mm
- Voltage: AC110V / 220 (60 / 50Hz)
- Power: 100W
- Weight: 17.5kg
- Max Loading: 65kg
- Table for Slit lamp, Keratometer Use
- Low noise, quality motor
- Suitable for laboratory
- Suitable for eye glasses shop



Double Motorized Table for Instruments MODEL: OPT - WZ3B Electronic Table Series

SPECIFICATIONS

- Table top size (Length and width): 900 x 420mm
- Table top up and down range: 180mm
- Voltage: 110V / 220 (60 / 50Hz)
- Power: 120W
- Unit size (Length, width and height): 900 x 500 x 820mm
- Weight: 60kg





Lens Meters

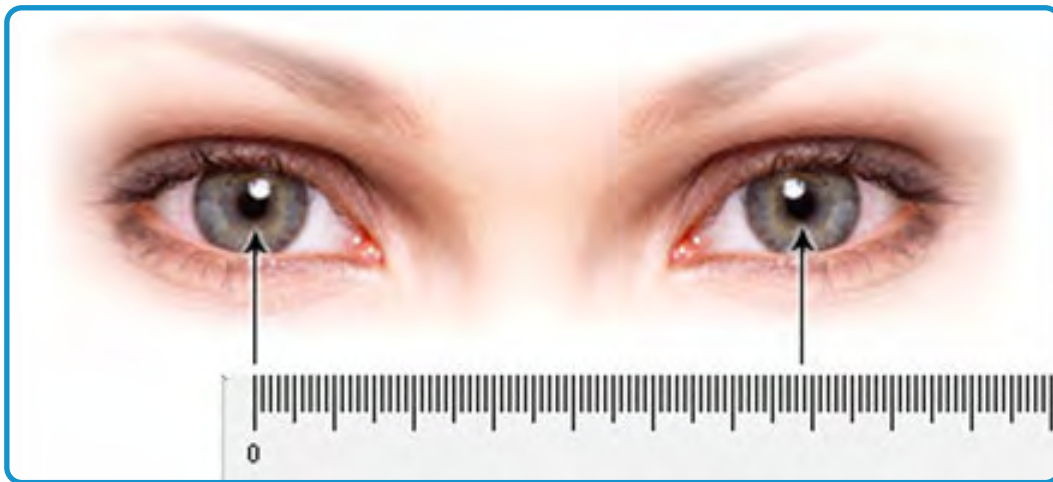
MODEL: OPT - PD Meter

SPECIFICATIONS

- Data Range: Binocular PD 46 - 82mm
Monocular PD 23 - 41mm
- Distance Range: 300 - infinity
- Indication Error: < 0.5mm
- Rounding Error: < 0.5mm
- Asymmetric Error: < 0.5mm
- Power Supply, DC 6V (4pcs AA cells)
- Automatic Standby Function



- Instrument Size: 232 x 163 x 71mm
- Instrument Weight: 600g



MODEL: OPT - Portable Lensmeter

SPECIFICATIONS

- Vertex Power: Range + 15 diopter to - 15 diopter
- Prismatic: Range 4 prism diopter Step 1 diopter
- Cylindrical Axis: Range 0° to 180° Step 5°
- Lenses Accommodate: Diameter: 20 to 80mm
- Eyepiece Focusing: - 5D to + 5D
- Bulb: 6V / 3W





Epsilon Lensmeters | Vert MODEL: MLM700 Epsilon Manual Lensmeter with Prism

SPECIFICATIONS

- Ranges of measurement: 0 to $\pm 20D$
- Minimum Scale Value: 0.125D graduation up to $\pm 5D$ and 0.25D graduations over $\pm 5D$ to $\pm 20D$
- Cylinder Axis Range: 0 - 180° Steps 5°
- Prismatic Power Range: 0 - 5°, 1 graduations
- Eyepiece Adjustment: $\pm 6D$
- Dimension: 170 x 320 x 350mm
- Weight: 4kg
- Measured lens diameter: $\varnothing 10 - \varnothing 90mm$
- Lamp: 220V 15W or 110V 15W



MODEL: Nano-1 Epsilon Nano Auto Lensmeter/ Vert

SPECIFICATIONS

- 3.5" color screen
- Small size, mini autolensmeter
- Only measure lens power
- Dot on the lens center
- Without UV, PD, Printer

Range of Measurement	Sphere	0~ $\pm 25m$
	Cylinder	0~ $\pm 9.99m$
	Axis	0°~180°(1°step)
	Addition	0~ $\pm 9.99m-1$
	Prism	0~15cm/m
Measurement Mode	Cylinder	+,+/-,-
	Prism	X-Y,P-B
	Prism degree	0.01cm/m /0.12cm/m /0.25cm/m
	Diopter	0.01m-1 /0.12m-1 10.25m-1 (D)
	Contact lens	Soft/hard lens
Specifications	Diameter of lens	$\varnothing 12 - \varnothing 90mm$
	PD	not available
	Weight	2.9kg
	Power supply	100~240V 50/60HZ 15VA
	Display	3.5"LCD
	Printer	external printer optional
	Size	185mm(W)x386mm(H)x166mm(D)
	Package	420mm(W)x250mm(H)x200mm(D)





MODEL: ALM750- Epsilon Auto Lensmeter / Vert

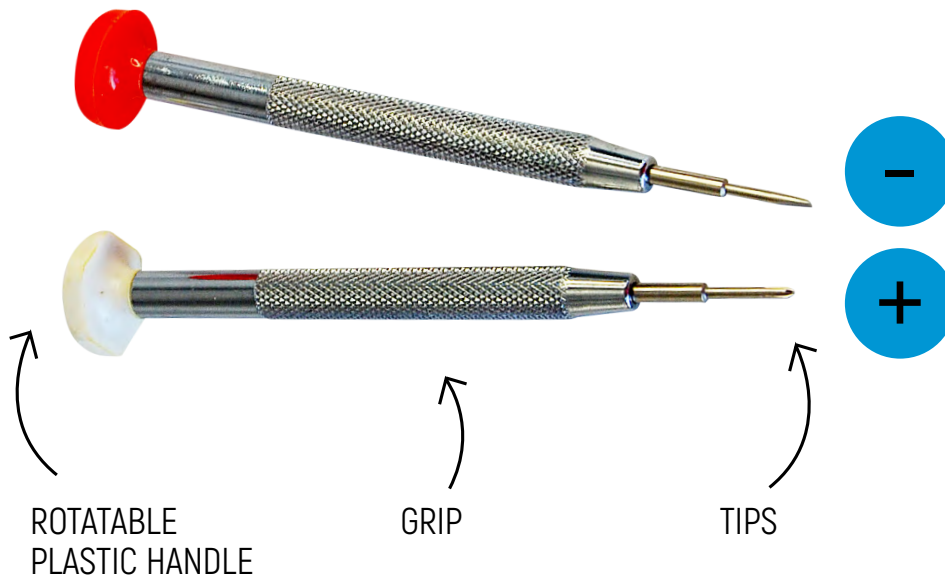
SPECIFICATIONS

- Sphere: 0 - $\pm 25D$ (0.01 / 0.12 / 0.25D steps)
 - Cylinder: 0 - $\pm 9.99D$ (0.01 / 0.12 / 0.25D steps)
 - Axis: 0 - 180 (1^o Step)
 - Addition: 0 - $\pm 9.99D$ (0.01 / 0.12 / 0.25D steps)
 - Prism: 0 - 15 (0.01 / 0.18 / 0.25 Δ steps)
-
- Measuring Mode: Lens Auto Correction
Contact Lens
 - Pupil Distance: 45 - 90mm, 0.25 steps
 - Cylinder: +, + / -, -
 - Prism: X - Y, P - B
 - Measuring Speed: 0.1 Second
 - Lens Diameter: $\varnothing 20 - 108\text{mm}$
 - Contact Lens: Soft / Hard Lens
 - ABBE: 30 - 60
 - Display: 5.6"LCD / TFT
 - Print: Thermal Printer
 - Power Supply: 100 - 240V 50 / 60Hz
 - Dimension: 222 x 161 x 372mm
 - Package: 530 x 330 x 370mm
 - Weight: Approx. 5kg





Screwdriver - 2 Piece Set



Lens Dye Packet

1 X water soluble dye pack makes **One quart (946 ml)** of dye solution.

Improved colour consistency.
Faster tint absorption into lens materials.

Bio-degradable pack can be immersed directly into hot water; avoiding spillage/mess.

Packets have 3 years shelf life.
Less storage space needed



AVAILABLE COLOURS



OFFICIAL DISTRIBUTORS OF DURE IN SOUTHERN AFRICA

PRODUCTS

- EDGING / BLOCKING PAD
- ANTI SLIP PADS
- SURFACE SAVER TAPE
- ALLOY BLOCKING COMPOUND
- WAX BLOCKING COMPOUND
- LENS POLISH
- TUNGSTEN DRILL BITS SET
- FILE SET, REAMER SET
- DURE PLUS LENSES

**SCAN THE
QR CODE** >

TO VIEW THE ENTIRE CATALOGUE





EDGING/BLOCKING PAD

#A2225.5

#A14.522

#A2431

#A1823

#A18.529

#A1733



22 x 25.5mm

Essilor
Visionix

14.5 x 22mm

Essilor

24 x 31mm

Essilor

18 x 23mm

Essilor
Visionix

18.5 x 29mm

Huvitz

17 x 33mm

Nidek

ANTI SLIP PADS [TRANSPARENT TAPE]

#A4028

#A4226

#A4226

#A4226



40 x 28mm

42 x 26mm

42 x 26mm

42 x 26mm



SURFACE SAVER TAPE

FOR ALLOY/WAX

	Wax Surface Adhesive Power	Alloy Surface Adhesive Power
H grade	standard	standard
G grade	standard	↓↓
C grade	↑	standard
M grade	standard	↑
R grade	↑	↑

M033H

H grade
width 100mm length 33m
Blue





ALLOY BLOCKING COMPOUND

Alloy 47/117 quickly and cleanly furnishes a firm bond between the block and taped lens, yet provides easy separation when surfacing and finishing operations are complete. The blocking material is reusable by simple reclaiming. Five pounds of alloy blocks approximately 10 lenses.



WAX BLOCKING COMPOUND



Proprietary, thermoplastic material eliminates alloy use, reclaim, and waste management. Formulated to remove health hazards and environmental risks in surface blocking. FreeBond's low melting, blocking temperature, and density results in cooler lens processing and fewer aberrations. Approximately 240 lenses can be blocked per gallon.



LENS POLISH



Multi-Shine

Multi-Shine has been designed for use on all organic lens materials available in today's diverse market. It is suitable for use in all freeform equipment and traditional polishing lines and is well suited for the customer who is looking for a high quality finish at a reasonable price. The lower level of viscosity allows for an increased flow rate. This is especially good when used on deep minus curved lenses. It also has the following characteristics: excellent suspension, easy mixing and clean up, long lasting, soft settle after resting and a superb surface finish.

Technical Data

APPEARANCE - White Slurry / AVERAGE PARTICLE SIZE - 1,3 microns / PH - 3,6 / BAUME - 20-21 / SUSPENSION TREATED - Yes / POLISH PAD COMPATIBILITY - All major brands of polishing pads but particularly suited to Cerium's White and Performance Polishing pads

Digi-Prime

The latest in particle size distribution technology and suspension treatment has helped us to develop this into the polish that others will strive to imitate. High stock removal characteristics, suitable for use on all organic lens materials, excellent suspension, easy mixing and clean up, soft settle after resting and a superb surface finish, ensure this is a polish suitable for all applications including AR coating. Digi-Prime is compatible for use with all types of surfacing equipment, from Free form to traditional. All polishes should be chilled and filtered during the lens polishing

Technical Data

APPEARANCE - White Slurry / PARTICLE SIZE - 2.5 - 3.5 Microns / PH - 3.2 - 4.2 / BAUME - 22 minimum / SUSPENSION TREATED - Yes / POLISH PAD COMPATIBILITY - All major brands of polishing pads but particularly suited to Cerium's Yellow and Silver pads



Poli-Shine

BENEFITS

- MORE AFFORDABLE THAN POLISHING LIQUID
- USEABLE IN BOTH CONVENTIONAL & DIGITAL LENS PROCESS
- SUITABLE FOR ALL TYPES OF LENS INDEX
- EASY TO STOCK & TRANSPORT

SPECIFICATIONS

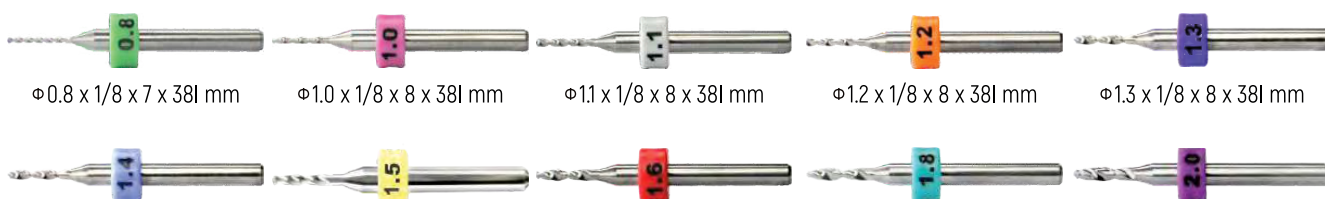
- APPEARANCE: WHITE POWDER
- PRINCIPAL COMPONENT: ALUMINUM OXIDE
- PARTICLE SIZE: 1.8 MICRON
- pH: 3.5
- BAUME: 20'~ 30'



TUNGSTEN DRILL BITS SET



D - A05



FILE SET



D - A62



D - A64



REAMER SET



D - A69



DURE™ Lens



SINGLE VISION

- S/V A.R.C CLEAR 1.56
- S/V CLEAR 1.5
- S/V CLEAR 1.67 ARC
- S/V SUNGRAY A.R.C 1.56
- SUNGLASS BROWN 1.5
- SUNGLASS G- 15
- SUNGLASS GREY 1.5
- SV CLEAR BLUE BLOCK ARC 1.56
- SV SUNGREY BLUE BLOCK ARC 1.56



FOR MORE DETAILED INFORMATION:

Visit: www.libertymedicalworld.com
Or Contact: +27 81 484 2088

BIFOCAL

- FLAT TOP SF 70/28MM UC (WHITE) 1.5
- FLAT TOP SF SUNGREY HC 70/28MM 1.56
- ROUND SAG SF 70/28MM (LENTICULAR) 1.5

PROGRESSIVE

- PHOTOCROMIC 1.56HC 70MM
- PHOTOCROMIC 1.67HC 70MM
- WHITE 1.50UC 70MM
- WHITE 75MM LARGE BLANK 1.50UC 75MM
- WHITE 80MM LARGE BLANK 1.50UC 80MM
- WHITE HRI 1.67HC 70MM
- WHITE POLYCARB 1.59HC 70MM
- FREE FORM HRI WT HC 1.74
- POLORISED FREE FORM (BRN)
- POLORISED FREE FORM (G15)
- POLORISED FREE FORM (GRY)



Gauges

Precision Conventional Thickness Gauge



Precision scaling



Plastic Tips to avoid scratches

Analogue Lens Thickness Gauge MODEL: OPT - A13 Lens Thickness Gauge





Analogue Lens Thickness Gauge
MODEL: OPT - A13A Lens Thickness Gauge



Digital Lens Thickness Gauge
MODEL: OPT - A13 Digital Lens Thickness Gauge



Digital SAG Lens Gauge
MODEL: OPT - Digital SAG Lens Gauge



Lens Base Curve Analog Gauge

Lens Base Curve Analog Gauge is used to determine the curve base measurements of all lenses with a refractive index of nd 1.53. Its measures from 0 to +/-20 diopters.



Gauges

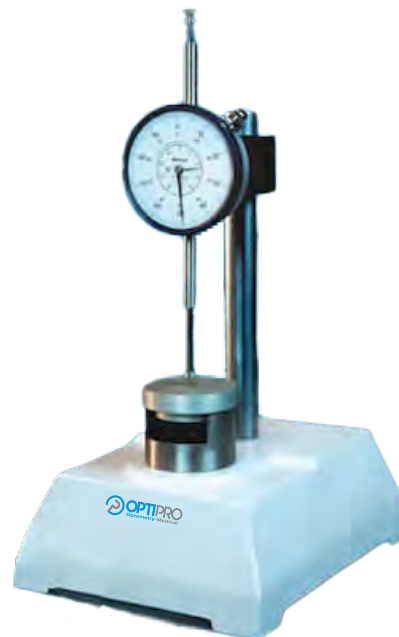
Sag gauges

- Accurate and calibrated, 40mm. base, others available on request
- Digital or dial gauge available.
- For spherical or cylindrical curves



Thickness gauges

- For checking thickness of blocked lenses and finish lenses



Geometric center marker

- Accepts lens blanks from 50 to 80mm



Three Hole Drill

MODEL: OPT - CD 80 Three Hole Drill

SPECIFICATIONS

- Choose lens frames with supplementary lenses
- Drill three holes after the pupil height line and PD were drawn. Then replacing the pattern it can be directly installed and used at Edge.



Former | Pattern Cutter

MODEL: LCP101 - Former | Pattern Cutter

SPECIFICATIONS

- Cuts out a pattern for 30 seconds with high accuracy and attractive finish.
- Frame is set simply in precise position and traced without deformation of the rim.
- 3 types of tracing probes - long, short and with roller are standard to meet a wide range of frame style.
- Compact and light weight design suitable for any workshop





Manual Blocker

- Compact and neat design
- No vision screen, No deformation and obtain exact target design.
- Compensating the accuracy of the lens and the position of the suction cup.
- Bifocal lens can be placed quickly and accurately, the small lens can also clarify projectile.
- Dimensions: 180 x 265 x 305mm
- Power: 110V AC 50Hz 10W 60Hz / 220V
- Weight: 5.0Akg



Pattern Automatic Lens Edger

MODEL: OPT - LE 310/ 420 Auto Lens Edger

- Working Model: Automatic work with Pattern
- Wheel Configuration: GL wheel; CR wheel; V groove wheel
- Available Lens Range: Flat Polishing wheel 18 - 75mm
- Range of Adjustable Measurements: -6.0 mm ~+ 6.0mm (Step 0.5mm)
- Voltage: AC220V / 110V 50 / 60Hz
- Power: 500W
- Dimension: 510 x 490 x 400mm
- Weight: 51kg (Main Body)



Hand Edger

MODEL: OPT - 35WV Hand Edger

- Original external shape
- Good water - proof capacity
- Drainage at the bottom
- Reversible rotation control by button
- High density abrasion wheel grinds lens fine, smooth and V.
- Dimensions: 300 x 220 x 280mm
- Net Weight: 8kg
- Power Requirement: 100 - 120V / 60Hz AC or 200 - 240V / 50Hz AC 120W





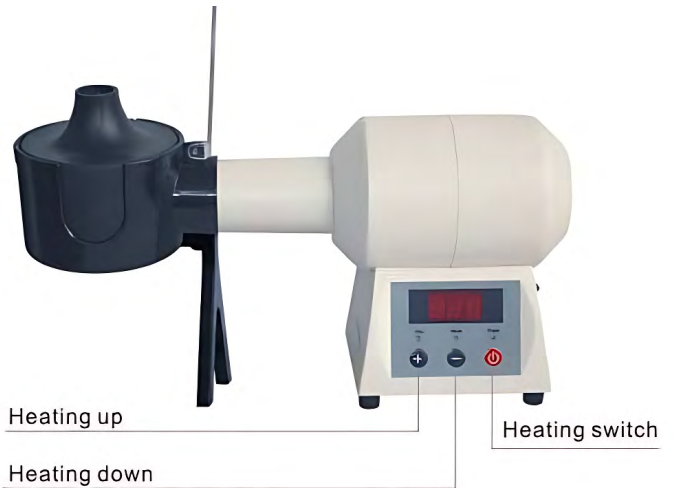
Frame Heater

- Adjustable temperature with LCD screen display
- Quick heat up time
- Stable temperature unaffected by external power supply
- Small hood for precise heating
- Fireproof plastic shell for safety and lightweight design

Material : Acrylonitrile Butadiene Styrene (ABS)

Dimensions: 23.5 x 12.5 x 25cm

Voltage: 110V



Ultrasonic Cleaner MODEL: OPT - CD4820

- Ultrasonic Frequency: 42,000 Hz
- Tank Material: Stainless Steel
- Timer: 5 time cycles: 180s - 280s - 380s - 480s - 90s
- Power Supply: AC100 ~ 120V,
- Ultrasonic power: 60W



Tank size:
2500ml With
heater option

Ultrasonic Cleaner MODEL: OPT - CD 4800

- Ultrasonic Frequency: 42,000 Hz
- Tank Material: Stainless Steel
- Timer: 5 time cycles: 180s - 280s - 380s - 480s - 90s
- Power Supply: AC100 ~ 120V,
- Ultrasonic power: 60W



Tank size:
1400ml

Auto Lens Polisher MODEL: OPT - 900 Auto Computerised Polisher

- Exquisite Exterior; Advanced Mechanical Capacity
- Suitable for CR39, Acrylic, Plexiglas & Optical Lenses
- Two pieces of IC plates attached, auto timing possible.
- Powerful Motor: Little Noise
- Dimensions: 270 x 210 x 150mm
- Timer: 1 - 5 min
- Power Requirement: 100 - 120V / 60Hz AC or 200 - 240V / 50Hz AC 90W
- Weight 5kg





Lens Groover

MODEL: OPT - 800 Auto Lens Groover

- Three types of grooving available: Centre, Front and Rear curve.
- Depth and location of groove easily and accurately adjusted.
- Lenses of glass, polycarbonate plastics and CR39, all acceptable.
- Dimensions: 270 x 210 x 150mm
- Net Weight: 2.7kg
- Power Requirement: 100 - 120V / 60Hz AC or 200 - 240V / 50Hz AC 90W
- Groove Depth: 0.07mm
- Groove Width: 0.6mm
- Acceptable Lens Thickness: 2 - 11mm
- Acceptable Lens Diameter: 28 - 70mm



Lens Driller/ Slotter

MODEL: MLD100 - Lens Drilling Machine

- Swivelling Arm
- Main power supply: 100V - 240V / AC
- Acceptable processing diameter: < 0 2.0mm
- Drill Work Frequency: 6000 - 13000 / min
- Power Loss: 4.8W
- Work Environment: 5°C - 40°C
- Lens Material: CR 39, PC Lens
- Dimensions: 468 x 460 x 400mm



UV Tester

MODEL: OPT - CP13B UV Tester

- Electric Voltage: 220V / 50Hz or 110V / 60Hz
- Power: 20W
- Weight: 0.6kg
- Volume: 26 x 14 x 10.5cm





Epsilon 3G Digital Lens Auto Drilling Machine MODEL: 3G-100D

SPECIFICATIONS

- Power Requirement: AC100V - 240V DC24V
- Power: 50W
- Drilling Speed: 0 - 5000 RPM
- Drilling Bits eccentricity tolerance: 0.03mm
- X axis moving range (Max.): 155mm
- X axis moving rated Load: 50kg
- Y axis moving range (Max.) 38mm
- Y axis moving rated Load: 30kg
- Clutch suction force (Max.) 1.5kg
- Resolution of the Encoder: Less than 0.07mm
- Clamping Capacity: ≥ 0.7 kg
- Dimensions: 302 x 228 x 270mm
- Weight: 5Kg



Photochromatic Lens Tester

MODEL: OPT - UV14

- Electric Voltage: 220V / 50Hz or 110V / 60Hz
- Power: 30W
- Weight: 0.5kg
- Volume: 23 x 10.5 x 12cm



Tinting Bath

MODEL: OPT - Lens Tinting Bath

- 4/6/9 pots of stainless tinting baths
- Temperature adjustable
- Bath: 700 ml



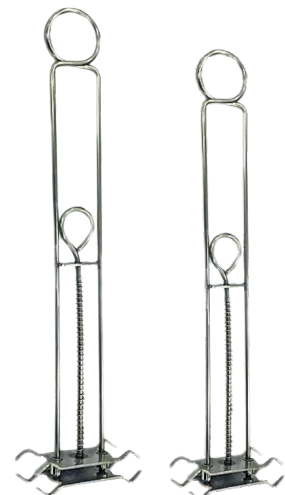
Tinting Bath Container

- Size: 110 x 100mm
- Depth: 100mm
- Volume of Water: 900ml
- Material: Steel



Tinting Bath Rods

- Tint lenses after they have been cut and edged to fit a frame.
- Many manufacturer lenses at times are cured and catalysed somewhat differently because of different batches and their position in the curing ovens
- Avoid mixing a surfaced lens with a stock lens. In most cases, these lenses have been catalysed somewhat differently because a surfaced lens began as a much thicker blank and it will accept the colour in a different manner.
- Be sure to clean lenses completely, removing all ink marking oil, and fingerprints that might have accumulated on the lens.





The UNIQUE UNICOS EDGER

UPE-900

3D Patternless Edger



MADE IN KOREA

One of the world's top leading optical lens edging equipment

The built-in safety bevel and grooving functionality is totally adjustable by the operator who can modify all parameters (width, depth) by simply using the colour touch screen

Simplicity

All edging parameters are adjustable via the intuitive operator's interface.

The large colour touch screen offers a clear understanding of the edging program

The lens shape can easily be modified to fit the Optician's needs

3D Patternless Lens Edging for Optical Labs

- Grooving & Chamfering
- User Friendly Operation
- OMA compliance





The UNIQUE UNICOS TRACER

UPT-900

Frame Tracer



MADE IN KOREA

Fast Tracing

The UPT-900 Tracer has the ability to rapidly scan either one or both eyes. It also has an automatic recovery feature to rescan the frame automatically at a reduced speed in-case the quality of a frame doesn't allow a fast speed tracing.

Frame Tracer for Optical Labs

- Wireless communication
- Size adjustable through computer
- OMA Compliance

High Precision 3D Tracing

The UPT-900 Tracer measures frames in 3D with extreme care to offer the best possible accuracy and a perfect matching between the lens and the frame. Even on highly curved frames.

Universal

The UPT-900 Tracer may scan small frames (B size 17mm) with a constant real-time monitored stylus pressure. This reduces frame distortion. The important Z movement capacity allows the measurement for high base-curved frames.

The UNIQUE UNICOS BLOCKER

UPB-900

Lens Blocker

Optimum Performance with unique features

Precise Manual Blocker

UNICOS' Centering device, Model UPB-900 has a screen diameter of 75mm and permeable illumination system for clear viewing. There are segment layout marks provided on the screen for right and left lens. The screen can be lowered to confirm the position of marked points, segment placement, etc. UPB-900 is compact and simple to operate.

Optimum Lens Blocker for Optical Labs

- Simple & Easy Blocking
- Size Adjustable
- Error Free
- Low Cost





Takubomatic



E I200

PATTERNLESS LENS EDGER WITH DRILL

Edging Lens Dia.	Dimensions
※Φ16 - Φ100mm	370(W)×370(D)×553(H)mm



Weight	Power Source	Power Consumption
41Kgs	AC100~120V,200~240V	600W 50/60Hz



※with Extra Small lens block chuck (OPTION)



R-lens							Change +/-
	TILT	FROM	X	Y	Depth	φ	D-Mode
NASAL	3	B-Ctr	22.50	06.95		1.4	Round
TEMPLE	3	B-Ctr	19.50	06.95		1.4	Round
TEMPLE	3	B-Ctr	19.50	06.00		1.4	Round
TEMPLE	3	B-Ctr	22.50	05.85		1.4	Round

▶ RE-EDGING Mode

Possible to do again Chamfering, Grooving & Polishing process by our Sensor system, even after you deblock a Lens-Block.

This function is available in only our machine in the world.

▶ Standard Functions

- Shape Modification mode in big main display
- Step by Step mode to check each process with care
- S Coat mode for slippery lens
- Tracing function for Demo lens
- Frame Exchange Mode
- 60 Jobs Memory

▶ Simple Drill Mode

Easily making holes in lens by input hole-position data on LCD screen. Also you can check the result in advance, at Checking-process.

R-lens						
X	Y	DRILL SIMULATION		X	Y	
19.50	06.00			22.50	06.95	
22.50	05.85			19.50	06.95	

▶ Advanced Check of Drill positions





Takubomatic

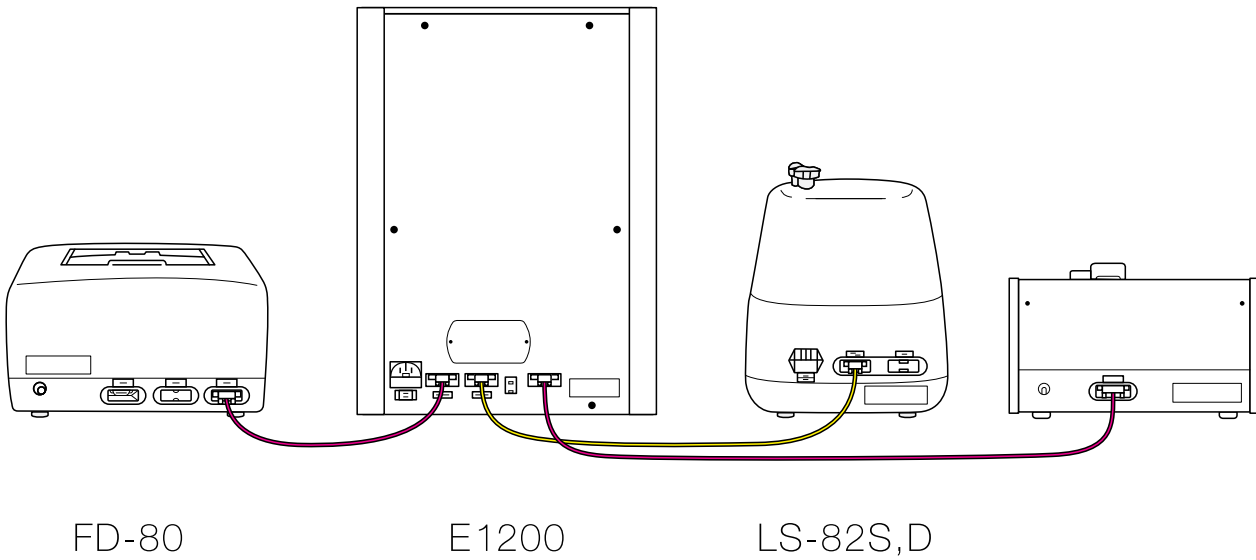
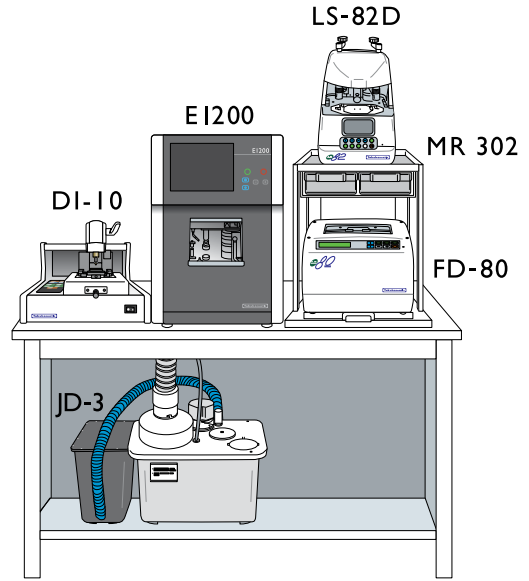
JD-3



Dimensions	Weight
170 (W) x 225 (D) x 245 (H) mm	3.1Kgs

DEODORIZER

E1200 CONNECTION SAMPLE



MR-301
Rack without drawer-case

MR-302
Rack with drawer-case

RACK



	Standard	For Glass and Fragile Lens	Extra small (Option)	Small (Option)	For Slippery Lens (Option)
Lens Chuck Block/Prism	9K-60	9K-66	9K-12	9K-50	9K-54
	9K-70	9K-72	9K-13	9K-74	9K-55
Adhesive Lens Block	9K-53A	9K-56A	9K-30	9K-53A	9K-56A
Chuck-Rubber	9K-71	9K-73	9K-14	9K-75	9K-57

Standard Accessory - CHUCK DETAILS



E 1000

PATTERNLESS LENS EDGER

GP >>>> Beveling + Chamfering + Grooving + Polishing

Type-P Beveling + Polishing

Type-S Beveling

Wheel Configuration

	E1000GP	E1000GP-2	E1000GP-3	E1000P	E1000S
U18SVOP POLISHING WHEEL					
U18SVO FINISH/RIMLESS+ BEVELING-STANDARD-WHEEL					
U14WVO FINISH/BEVELING- STEP BEVEL-WHEEL					
U14TVO FINISH/BEVELING- WIDER-WHEEL					
U16R GLASS ROUGHING WHEEL					
U18UR PLASTIC ROUGHING WHEEL					
CHAMFERING/ GROOVEING WHEEL					

Edging Lens Dia.	Dimensions
※Φ16 - Φ100mm	370 (W) × 370 (D) × 540 (H) mm
Weight	Power Source
39Kgs	AC100~120V, 200~240V
Power Consumption	600W 50/60Hz

※with Extra-Small lens block chuck (OPTION)





Takubomatic

FD-80

TRACER

(ISO16284 (VCA) correspondence machine, only when a special specification PC Board for VCA is installed by us)

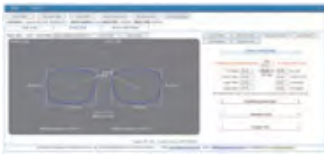
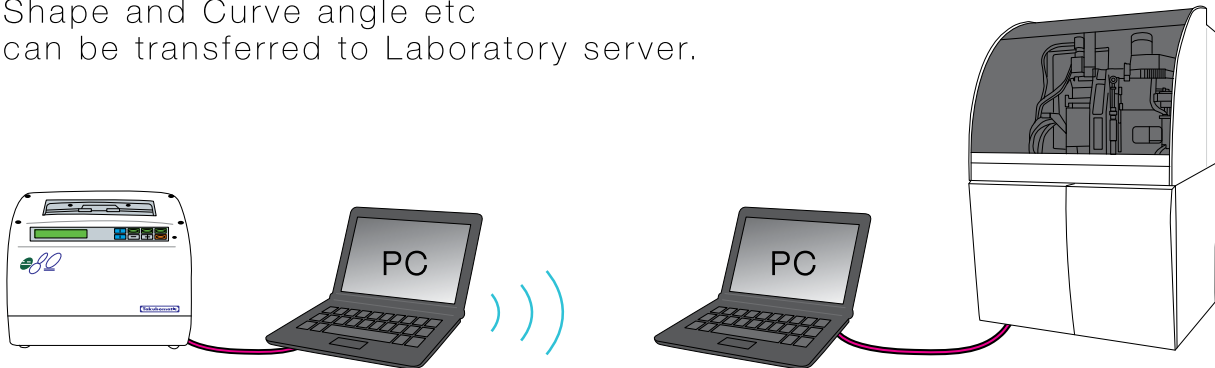


▶ 200 job data storable with Bar-code reader (OPTIONAL)

Measuring Method	
Auto.both-eye measurement in three dimensions	
Weight	Power Source
7Kgs	100-240 V a.c., 50/60Hz
Power Consumption	
24V d.c., 20W (to be used with A.C. adaptor)	
Dimensions	
280 (W) × 310 (D) × 180 (H)	
Data storing capacity	
200 data	

Lab-Tracer in VCA protocol

As a Lab-tracer, Layout Data including the traced Shape and Curve angle etc can be transferred to Laboratory server.



(For this Remote-Edging system, special software program From Pegaso srl, should be installed in PC)

Pegaso srl: <http://www.pegasovenezia.com/>

▶ VCA (or OMA) protocol enables communicate with other manufacturer's brand

(Note)

- Please note the Special Control Board for VCA / OMA protocol needs in FD80
- LAB software program should be installed on each PC in advance



Takubomatic



LS-82S, LS-82D

LENS BLOCKER

Style of Blocking	
Suction cup blocking/Adhesive pad blocking	
Weight	Dimensions
4.5Kgs	215(W)×270(D)×310(H)
Power Consumption	
16W/50Hz/60Hz	

LS-82S
SINGLE ARM TYPE



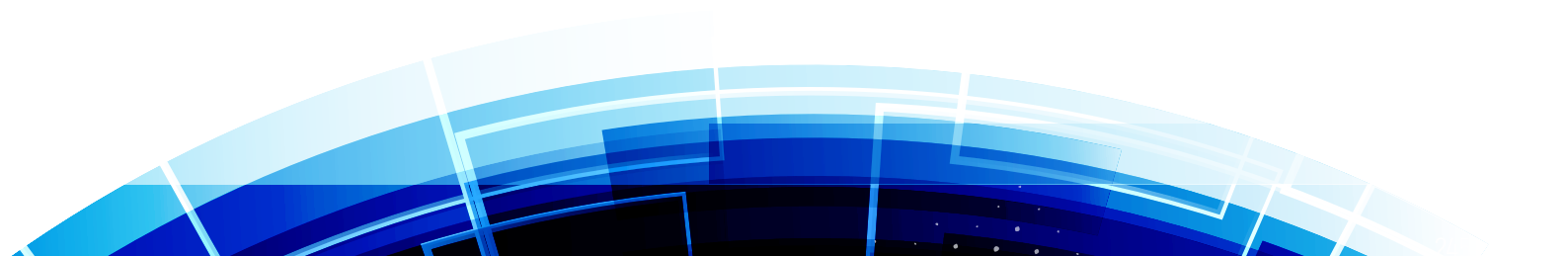
SD-1

SIGNAL DISTRIBUTOR

► Five instruments can be connected with one FD-80 via equipment, as data communication hub

Power Source	
AC120V-230V 1.5W	
Weight	Dimensions
1.5Kgs	105(W)×250(D)×110(H)mm

OPTICAL LAB LENS GENERATING MACHINES





Axis Markers & Blockers

Axis Marker. MODEL: AX01

- Automatic marking of any axis
- Magnified viewer
- Stainless Steel body and covers
- Accurate and Fast



Axis Marker. MODEL: AX02



Wax Blocker. MODEL: WB01

- Uses Blocking Wax instead of alloy
- Economical - Reduces cost per lens as wax is much cheaper than alloy
- Can be used with Gerber Coburn Blocks for Step One / Eclipse
- Better quality lenses with less center thickness



Wax Blocker. MODEL: WB02





Alloy Blockers

MODEL: ALB01 - T 112

- Digital Temperature Controller indicator for longer alloy life
- Turbo Chilling chamber reduces the time required to block lenses by 50%, increasing throughput up to 120 lenses per hour
- Complete body and parts made of stainless steel
- Suitable for all temperature alloy
- Power Supply: 1000W (220V A.C)
- Dimension: 34.7 x 33.9 x 54.9cm



Alloy 301 Blocker

MODEL: ALB02 - T 112

- Chilled water cooled blocking ring.
- Can accommodate different diameter blocks.
- Compact : 27(W) x 34(D) x 39(H) cms. Power Single Phase 1.2 KW.



Alloy Reclaiming Tank (Alloy Deblocker)

- Complete stainless steel construction.
- Tray with pockets to hold the blocks.
- Size : 32(W) x 58(D) x 50(H) cms.
- Power: Single Phase, 1.2 KW



Lens Preparation Units Pneumatic Tape Applicator

- A precision air-powered device designed to apply protective edging tape to optical lenses quickly and evenly. Ensures consistent adhesion, reduces manual effort, and improves workflow efficiency in lens edging and glazing processes.



Geometric Centre Marker

- Can reduce blank dia up to 50mm.
- Accepts blocked blanks.
- Dual wheels – for glass & plastic.





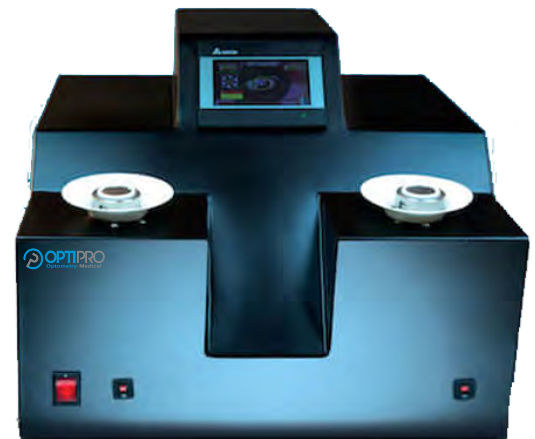
Lens Marking Units Mist Marking - MM1

HIGH PRODUCTIVE YIELD: 7sec / lens
Marks your logo on any plastic lens (CR-Uncoated, Hard coated and ARC) and GLASS with Anti-Reflection Coating (ARC)
Supports production inventory
NO CONSUMABLES REQUIRED, hence NO marking cost
Overall size: 36 x 36 x 36 cms



Mist Marking - MM2

HIGH PRODUCTIVE YIELD: 7sec / pair* (*depends on coating type)
Marks your logo on any plastic lens (CR-Uncoated, Hard coated and ARC) and GLASS with Anti-Reflection Coating (ARC)
Supports production inventory
NO CONSUMABLES REQUIRED, hence NO marking cost
Overall size: 46 x 56 x 30 cms



Semi Automatic Progressive Marking

Models: PRM01
Fully Pneumatic operation
Can mark any lens dia up to 90 mm
Printing with your own design, logo and brand



Semi Automatic Progressive Marking

Models: PRM02





Lens Generator SGX Pro Lens Generator

Continuing with the SGX series' great reputation, the SGX Pro provides progressive labs around the world with proven, high performance cutting technology for CR39, hi - index and polycarbonate lenses.

Based on the SGX Plus Platform design, the SGX Pro Surface Generator is equipped with new electronics operating on a Windows 7 platform.

Its user interface has been upgraded and includes a touch screen monitor. Coburn provides a SGX Pro Upgrade kit for SGX Plus users looking to modernize their equipment.

OPHTHALMIC LENS GENERATOR FEATURES

- Ideal for small to medium sized labs
- Based on the proven SGX Plus Platform Design
- Process Trivex, CR39, hi - index, and polycarbonate lenses
- Modern Electronics with the ability to utilize USB loading and backups
- Windows 7 platform
- Modern user interface - including touch screen monitor
- Upgrade kit available to convert a 230 volt SGX to a SGX Pro
- Upgrade kit includes a stand-alone tower connected to the SGX



Touch Screen User Interface



USB Capabilities



Process Trivex, CR39 Polycarbonate & High Index Lenses





Lens Surfacing N 900 Toric Lens Generator

Fully Pneumatic operation
Can mark any lens dia up to 90 mm
Printing with your own design, logo
and brand



CNC Lens Generator (Vector 7)

Compact, Small Foot Print
Easy operation with bar code scanner for data transfer
Can be connected to our LENS CALCULATOR SOFTWARE and
other software
Low Cost of Maintenance, easy availability of spares
Simple "ON SCREEN" Calibration
Wet Cut for long Cutter Life, only ONE PCD Cutter
ON LINE Remote Support via Internet
Can Operate Multiple CNC Machines with one Calculation
Software
Overall Size: 90X 60X 95 (heights) cms.
Weight: 700kgs
Electrical: 220v, 50Hz, 3.0 kw
Capacity: Approximately 360 lenses* per shift(*depends on
curves cut)
Range: up to 20.00 curve, 10 cyl, 8 prism



N800 Polish Tank SS-1



N800 Polish Tank SS-1





Tool Rack

- Ideal for saving space and easy location of tools
- Can hold 840 tools of 80 dia.
- Can be rotated, so only one side needs to be accessible.
- Size: 85 x 85 x 187cm



Smoother & Polisher MODEL: OPT - 109 Smoother & Polisher

- Material: CR39, Polycarbonate, high index materials and mineral glass
- Working Range: Plano up to: - 20 D concave, tool diameter 90mm max
- Work piece diameter up to 90mm
- Power: Three phase 1HP Motor
- Dimension: 27.55" x 26.00" x 36.38"
- Smoothing: Glass 4 to 5 minutes, CR39 - 1st Fine, 60 seconds 2nd Fine. 60 seconds
- Polishing: Glass - 5 to 6 minutes, CR39 - 3 to 5 minutes
- Every 2 Spindle toric: T model will smooth and polish spherical and toric lenses with exceptional accuracy.
- Pneumatic Reception Chuck holds the lens in position and applies uniform pressure across the entire surface of the lens.



Hard Coating Machines

Hard Coating Oven



- A hard coating oven is used to cure a hard coating applied to spectacle lenses, enhancing their scratch resistance and durability, typically after the lens has been dipped in a solvent-based hard coat solution.

Trio Chill

MODEL: OPT - T 159 Trio Chill

- Uses a highly efficient refrigerant that is environmentally friendly and does not harm the ozone layer.
- Galvanised steel housing is corrosion resistant even in aggressive environments.
- Hermetically sealed compressor
- Compact, highly efficient, self contained unit
- Compressor Unit and Little Giant Pump are mounted on a stainless steel condensation tray with castors for mobility.
- Simple installation and operation
- Easy access to movable parts for quick maintenance.
- Low sound operation





Hard Coating Machines Semi Automatic 8T



Fully Automatic Hard Coating Machine

- Complete machine made of stainless steel
- Total 14 tanks, made in stainless steel 316 L
- 2 lacquer tanks, 1 primer tank, all with temperature control and filtration
- Attached 2 mlx bed units for continuous pure de-mineralised water in last 2 cleaning stages
- Very user-friendly screen design, all process parameters adjustable on screen
- Hepa filtered air inlet for clean atmosphere
- Specially designed clip holders for perfect balance, 6 lenses per clip holder
- Can preset type of lens coating and lens lift speed from lacquer tank at the time offloading the lens holder
- 3 tanks with ultrasonics

TECHNICAL SPECIFICATION

- Overall size
- 260 x 126 x 186 cm
- Weight
- 450 kas. (Approx)
- Electrical supply
- 440v. 50Hz
- Total power rating
- 32 amps (5.6kw) Approx
- Lenses/Holder
- 6 lenses
- Lens size
- 40 to 90 mm.
- Dia Capacity per shift
- 430 lenses (approx.)
- Tank 175 x 110 x 175 mm.
- Capacity/tank



**COBURN
TECHNOLOGIES**

X



OPTIPRO
Optometry • Medical



OPTICAL LENS SURFACING

LAB MANAGEMENT SOFTWARE

RXPro



RXPRO

Coburn's RXPro Lab Management Software introduces cutting-edge technology for both conventional and freeform lens processing in your laboratory. The application has many configurable options and considerably more accurate Rx calculations. RXPro is an ideal lab management software for small to medium-sized labs seeking to improve the generating process at an affordable price.

Customizable User-Friendly Design

- **Reduce Training Time and Staffing Needs:**
The intuitive interface is designed to minimize the learning curve, enabling staff to operate the system efficiently with minimal training.
- **Easy-to-Use Menu-Based Software:**
Simplify data input through a user-friendly menu system, ensuring that users can easily navigate and input information without confusion.
- **Password Protected Features:**
Require users to authenticate themselves with a username and password before accessing protected features.

Lens Database

- **Auto-Generation of Lab-Specific Lens Database:**
Automatically generate a lens database tailored to each lab based on the initial entry of blank details.
- **Vision Council Format Compatibility:**
Ensure the lens database is preloaded and maintained in accordance with the Vision Council's standard format.
- **Easy Management of Blank Parameters:**
Facilitate the addition, deletion, and modification of blank parameters through an Excel interface for ease of use and flexibility.

Blanks Inventory

- **Inventory Management:** Maintain an accurate record of both complete stock and current in-hand stock, ensuring efficient monitoring and management of blanks.
- **Automated Synchronization:** Automatically synchronize inventory data with the lens database to reflect changes promptly, especially when new blanks are introduced, or existing ones are updated.

Device Interface

- **Integration via RS232 Serial Communication Module and RJ45 Network TCP/IP Module:** Facilitate seamless integration of devices using RS232 serial communication and RJ45 network TCP/IP modules for versatile connectivity options.
- **Live Monitoring of Machines:** Provide a centralized interface for live monitoring of all integrated machines, displaying comprehensive job data on a single screen.

Reports

- **Interactive Statistical Report Generation:** Generate detailed statistical reports categorizing production data by material type, design specifications, and coating variations.

Graphical Display of Job Data:

Present production data through visual representations such as pie charts for material/design/coating breakdowns and bar graphs for comparative analysis.

Summary Reports and Filtering:

Provide summarized reports on daily, monthly, and yearly production metrics. Enable filtering and customization options to extract specific production data for detailed analysis.

File Processing

- Interface between ERP and RXPro using RXI files.
- Logs with color differentiation of jobs processed status.
- Jobs processed via FP can be reviewed/modified manually Multiple Job Entry.

Client/Server Module

Facilitate multiple job entry modules within a client/server architecture to streamline operations in high-production laboratory environments.

Label Printing

Provide a streamlined process for printing lens labels with barcodes for lens covers, ensuring accurate identification and tracking within the production and distribution process.



PRISMATIC BLOCKING

SPECTRUM, SPECTRUM^{PR}, SPECTRUM^{PL}

Spectrum Blocker Series

Designed for compatibility with all common surfacing machines, the Spectrum Prismatic Lens Blocker provides extremely precise alignment of the lens at the correct prism angle.



AVAILABLE IN THREE MODELS:



Base Model,
Wax Blocking



Prismatic Model,
Alloy Blocking



Plano Model,
Alloy Blocking

FEATURES

- Scan ticket to enter job data, manually enter, or enter through the LMS
- Fills in 5 seconds with autofill function
- Chills in 20 seconds
- Defines alignment target with lens design-specific templates for single vision, progressive, flat top and executive lenses
- Removable blocking rings
- Adjust lighting for darker lenses
- Compatible with all common lens surfacing machines



Spectrum Base Model
Standard Pin Style Wax Blocks



Spectrum^{PR} and Spectrum^{PL}
Loh Style Blocks

Spectrum is capable of parallel processing; while first lens is blocked, second lens is laid out.



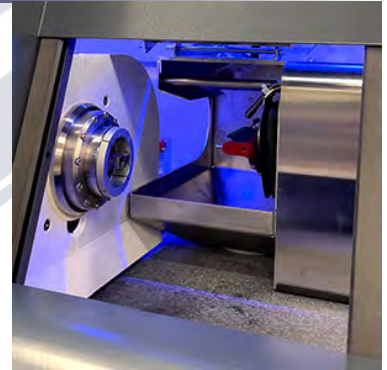


DIGITAL GENERATING

NEXUS DGT



NEW!
NEXUS DGT



The NEXUS Digital Surfacing System leverages the technology in the acclaimed Cobalt Digital Lab to produce high quality digital Rx lenses. The system includes the NEXUS DGT Digital Lens Generator and the NEXUS DP Digital Lens Polisher. Each system represents a significant upgrade from its predecessor.

- **Higher Throughput:** Equipped with increased speeds and higher throughput than the Cobalt NXT and NX, allowing labs to process more jobs faster than ever.
- **Superior Lens Quality:** The high performance NEXUS DGT produces superior quality and accuracy of lenses. NEXUS DGT is designed for processing all indexes of lenses (1.498 to 1.74).
- **Automated Calibration:** The NEXUS DGT comes built with automatic calibration for faster and efficient lens processing. Cutter height adjustment remains manual. Manual calibration still available.
- **On-Board Engraving:** Engraving capabilities that produce simple shapes and alphanumeric characters using the secondary axis. Now the need to purchase additional equipment is eliminated.
- **Interrupted Cut:** Interrupted cut brings a new feature to Coburn's lens generators, which is available on the x-axis.
- **Cold Mist/Dry Cut:** With on-board cold mist/dry cut, the need for expensive waste management is removed.
- **User Friendly:** Larger 19" monitor with options for setup, running jobs, calibration, diagnostics, and maintenance.
- **Automation Ready:** The NEXUS DGT has the capability to be upgraded for automation for labs looking to completely automate their freeform processes.



DIGITAL GENERATING

COBALT NX & NXT



COBALT NX

"A smaller way to process freeform with an expandable product platform that can grow with your business" COBALT NX



Coburn's Cobalt NX lens generator produces superior quality lenses in terms of form and finish. Building on the Cobalt heritage, this next generation Cobalt machine incorporates several enhancements including a linear motor and an integrated spindle to provide extra precision and more accurate lens geometry. Cobalt NX delivers better surface results than competitive dry-cut and wet-cut processes without any water management.

- **Enhanced Lens Quality:** The quality of the lenses produced with the Cobalt NX is far superior to that of previous generators. Cobalt NX is designed for processing all indexes of lenses (1.498 to 1.74).
- **Automated Calibration:** Manual calibration is still available for more control of the process, but for those who want an automated machine, Cobalt NX comes built with automatic calibration for faster and more efficient lens processing.
- **On-Board Engraving:** Cobalt NX now includes engraving, with capabilities to produce simple shapes and alphanumeric using the secondary axis. Now, the need to purchase additional equipment is eliminated.
- **Interrupted Cut:** Interrupted cut is a new feature which is available on the x-axis.
- **Cold Mist/Dry Cut:** With on-board cold mist/dry cut, the need for expensive waste management is removed.

COBALT NXT

Cobalt NXT is the successor to Coburn's previous large-format freeform generator, the Cobalt DS. Built with more advanced processing software than Cobalt NX, the Cobalt NXT represents Coburn's next generation platform for lens surfacing.

- **Automation Ready:** Cobalt NXT has the capability to be upgraded to a fully automated machine for labs looking to completely automate their freeform processes.
- **Higher Throughput:** Cobalt NXT comes with increased speeds and higher throughput than the Cobalt NX, allowing labs to process jobs faster.

COLD-MIST TECHNOLOGY

Cold-Mist Technology atomizes a water-based lubricant directly at the cutting diamond which saturates the lens surface and creates a "wet core" for the cut but evaporates completely after it leaves the chamber. This results in a lens surface equivalent to competitive wet-cut generators without the need for water management.



CONVENTIONAL GENERATING

CTL65



CTL65

"All the benefits of advanced dry cut, cut - topolish lens processing that you have come to expect from Coburn in a compact footprint"

A compact turning lathe which utilizes Coburn's patented single-point technology to produce conventional lenses for small to medium-sized laboratories. Using the CTL65, semi-finished lens blanks are surfaced, cribbed, and safety beveled in a fast and accurate process. Using a multi-data system to reduce lens spoilage, while optimizing lens and lap cycle times, the need for an expensive water reclaiming filtration system is eliminated. The CTL65 is the fastest traditional Rx lens generator in its class. An entry-level lathe generator that cannot be upgraded to process freeform, but is an ideal fit for labs familiar with Coburn's popular SL2 series of generators.

- Patented, single-point precision turning technology for standard and advanced lens processing
- Dry-cut generating technology means no more water filtration systems for lens waste removal, water treatment chemicals or lens coolants, and smaller operating footprint in lab space
- Smooth surface finish guarantees consistent one-step fining across a range of lenses
- Interrupted Polycarbonate lens cutting feature for smaller lens strands
- Stiff and robust granite base provides improved stability and less sensitivity to external vibration for higher quality output
- Faster processing times and increased throughput compared to the popular SL2 generator
- Large touch screen operation makes for easy navigation
- Optional "Crib-to-Oval" cutting feature for non-circular lens requirements



DIGITAL POLISHING

NEXUS DP & COBALT DP



"These look like polished lenses should look: they are clear, I can read them and see everything I need to in the surface"

"If there is an issue I can catch it before I waste the money and time coating them"



NEW! NEXUS DP

The NEXUS DP is the successor of the Cobalt DP lens polisher. It represents the next generation of high speed, soft-tool digital lens polishing. It produces polished lens that are optically clear and virtually haze-free. NEXUS DP can easily pair with NEXUS DGT or Cobalt NX, NXT, or NXT+ lens generators, as well as any other compatible freeform surface generator.

- Only 2 soft tool laps needed for polishing complete range of lens curves: 1 for 80% of range, 1 for remaining 20%
- 80% of range accomplished with just 1 lap
- Variable axis controls allow for precision and customizable control
- Haze-free polishing process that produces crystal clear lenses after polishing – no coating required to remove haze
- Manual rinse station with foot pedal operation
- Isolated polishing chambers allow polishing of two one-eye jobs of different materials at the same time

- Widest available soft--tool curve range: 0 to -14D, 6D cylinder, 6D prism

COBALT DP DIGITAL POLISHER

The Cobalt DP high speed, soft-tool digital lens polisher is part of the Coburn's high volume production system for freeform and traditional Rx lenses. Final polished lenses are optically clear (virtually haze-free), without the need to apply hard coating for optical clarity. It produces better surfacing (cut & polished) freeform lens results than any other system.

IVC LAP TECHNOLOGY

Utilizes advanced physics of soft-tool products with a unique 4-axis motion control so that only two tools are required, which radically simplifies and improves the overall polishing process in the lab.





DIGITAL POLISHING

ACUITY PLUS & ACUITY MAX



"Its unique ergonomic design exceeds the industry standard, making it exceptionally fast and efficient"



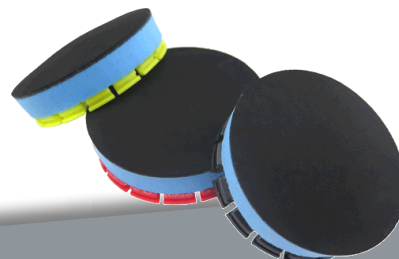
ACUITY PLUS CYLINDER MACHINE

The innovative Acuity Plus cylinder machine easily handles a wide curve range, producing consistently excellent results via a one- or two step fining process. Such versatility is achieved without stroke adjustments. In addition, its unique ergonomic design exceeds the industry standard, making it exceptionally fast and efficient. Clean, modern styling, compact size, and quiet operation make it ideal for any lens processing environment.

- Enhanced fluid delivery system
- Accommodates a wide curve range
- Quick and easy calibration
- Unique ergonomic design with optional work light
- Compact and quiet

ACUITY MAX SOFT POLISHER

Now, it is possible to work in cut-to-polish mode in the production of conventional lenses with the Acuity Max polisher along with the CTL65 generator. Eliminating the use of hard tools from the conventional surfacing process, the user is able to reduce the storage space needed for tools as well as manual labor associated with maintaining the tools.





AUTO DE-BLOCKER

AGILITY

"The first of its kind; a completely waterless, automated deblocking solution"



AGILITY AUTO DE-BLOCKER

Agility is ideal for high volume labs that prefer a convenient automated solution. Both lenses are automatically removed from a job tray, placed onto the appropriate deblocking rings, and then de-blocked simultaneously using a mechanical action. Contrary to de-blocking with powerful water jets that displace alloy, causes alloy waste, and produce contaminated water waste, Agility separates the lens from the block, without water, in one clean, swift, mechanical action. Achieve complete, seamless automation of de-blocking, de-taping, cleaning and coating when paired with the Duality Lens De-taper & Cleaner and Velocity Optical Spin Lens Coater.

- High volume deblocking solution
- Completely waterless; eliminates toxic water waste
- Quick, mechanical deblocking
- Deblocks up to 220 lenses per hour
- Two options for block handling:
 1. Place on belt for downstream automated alloy recovery
 2. Drop into container for manual alloy recovery
- De-blocks all lens materials (except glass)
- Compatible with 50-90mm lens diameters with 2mm minimum overhang
- Smaller footprint than other automated de-blocking options
- Easy access for services and diagnostics
- LMS connectivity



Alloy remains completely intact and ready for 11 reclaim.





ALLOY RECOVERY

INTEGRITY

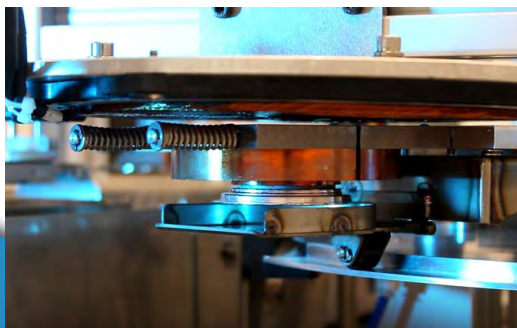
"Revolutionary in the optical industry, Integrity is substantially safer and more efficient for alloy recovery."



INTEGRITY

The Integrity Alloy Recovery System is the first and only product in the market that offers an automated, efficient, and environmentally friendly alternative for alloy recovery – without the use of water jets or hot water tanks. The Integrity system uses induction heating technology to melt a very thin layer of alloy where it engages the block, allowing the alloy puck to separate cleanly and completely intact. The collected alloy pucks can be placed directly into the reservoir of a lens blocker without having to remelt them beforehand. The blocks are collected or neatly stacked for reuse. As a completely waterless system, Integrity significantly improves lab cleanliness and safety.

- Pair with the Agility Autodeblocker for a complete deblocking and alloy recovery solution
- Completely waterless separation of block and alloy
- Safer and more environmentally friendly
- Processes up to 240 pieces per hour
- Alloy puck remains completely intact
- Alloy pucks are ready for reuse in a blocker
- Alloy is collected separate from blocks
- Blocks are collected or neatly stacked
- Small footprint



"Pair with Agility for complete automation."





LENS DE-TAPER & CLEANER

DUALITY



"Save money and space with our one of a kind, 2-in-1, Duality."

DUALITY LENS DE-TAPER & CLEANER

With Duality, automation is expanded one step further in the lens production process. Paired with the automated Velocity Spin Optical Lens Coater, Duality offers hands-free processing from tape removal through cleaning and coating. Duality is the only machine to perform two (dual) functions (de-taping and cleaning) to the lens in one product. Save money and space with the following features:

- **De-Taping Mechanism:** Duality effectively removes surface saver tape off a broad variety of lens geometries and materials eliminating the labor associated with the traditionally manual process.
- **Two-Sided Lens Cleaning:** Clean lenses are critical to improving coating yields. Duality provides a thorough removal of all debris often found on a lens after surfacing – polish, tape adhesive and blocking materials. First, the lens is put through mechanical brush action cleaning, then a high pressure wash with detergent, followed by a rinse and dry.
- **Fully Automated:** Fed by a conveyor, the lens is automatically removed from the tray, de-taped, cleaned on both sides, and prepped for coating without manual intervention.
- **Savings:** The investment in Duality is easily justified with the labor savings usually applied to

tape removal and lens cleaning, and is significantly lower than the cost of the competitive products.

- **Small Footprint:** Significantly smaller footprint compared to competing products at less than 12ft².
- **Fast:** Each station – tape removal, front side cleaning, and back side cleaning – completes their function in 20-30 seconds

DUALITY^{AR}

Duality's capabilities have expanded! Remove progressive ink markings and UV-cured blocking materials, along with de-taping and cleaning.

- **Fully Automated:** Like the standard Duality, lenses are fed by a conveyor and automatically removed from the tray, de-taped, cleaned on both sides, and prepped for coating without manual intervention.
- **Small Footprint:** Same square footage as standard Duality, at less than 12ft².
- **Fast:** Each of the three stations – tape removal, front side cleaning, and back side cleaning – completes its function in 20-30 seconds.

Duality is also available as a wash-only unit.





HARD COATERS

VELOCITY



"Fully automated & fastest spin coater on the market"



VELOCITY 2D

Derived from the existing platform of the ground breaking Velocity Automated Spin Coater, the Velocity 2D is the next generation of our Velocity system that offers a dual coating station as an option. The standard Velocity 2D machine comes with a single coating station. It can be paired with Coburn's Duality Lens De-Taper and Cleaner to offer labs smart, scalable automation for lens processing, as lenses are de-taped, cleaned, and coated in one smooth process.

The automation system handles the lens from the job tray through a multi-stage system of pre-cleaning, secondary cleaning system, coating, curing and then returning the lens to the job tray, without any operator involvement.

- Option to apply two coating solutions in one machine
- Automatic viscosity-adjusted coating height
- Spin speed monitoring for proper coating thickness
- Automated lens loading and unloading with multi-stage pre-cleaning system

- Throughput of up to 130 lenses per hour
- 5 station UV coating machine including load, wash, coat, cure and unload
- Thermally controlled coating station that keeps the coating viscosity consistent
- Recipe driven environment for coating process control
- LMS connectivity
- Easy access for services and diagnostics

VELOCITY MANUAL

The Velocity Manual Spin Coater accomplishes UV coating in five stations: load, wash, coat, cure and unload.

- Thermally controlled coating station that keeps the coating viscosity consistent
- Throughput of up to 120 lenses per hour
- Recipe driven environment for coating process control
- LMS connectivity
- Easy access for services and diagnostics



HARD COATERS

VELOCITY LTE & TT



VELOCITY LTE

Velocity LTE Spin Coater is a backside, UV-cure lens coating system for small to mid-sized labs who seek more control in their lens coating processes. Each spindle can be controlled independently by the operator by way of a user-friendly control panel. Velocity LTE operates in a recipe-driven environment based on the type of coating, lens material or geometry of the lens. Coat lenses with custom cure profiles to control higher index materials, eliminating the warping of lenses. Loading lenses is simple; due to smarter programming, the next lens can be loaded during the coating of the first lens. Velocity LTE also has an autopriming function immediately following lens load.

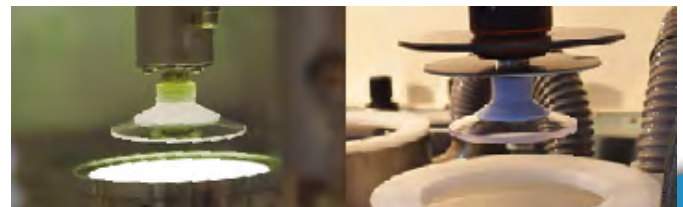
- Independent spindle speed control
- Recipe-driven environment for varying lens parameters
- Custom cure profiles to eliminate warping on high index materials
- Suitable for small to mid-sized labs
- Intuitive user interface
- Eliminates overspray
- Auto priming
- Processes up to 80 lenses per hour
- Small footprint



VELOCITY TT

The Velocity TT is the newest tabletop spin coater, offering compact and cost-effective lens coating for small and mid-sized labs. Velocity TT allows labs of virtually any size to hard coat lenses in their own space. Designed for efficiency, it processes two lenses in just 2:30 minutes, achieving a throughput of 40-50 lenses per hour.

- Compact and cost-effective
- Improved accessibility in producing high quality coatings in-house, improving turnaround times
- Eliminate the need for outsourcing
- Set-and-forget functionality
- Efficient and fast cycle time results in a throughput of 40-50 lenses per hour
- Consistent spin speeds and uniform coatings without the need for constant calibration
- All solids coatings





COBURN HARD COATINGS

PROCOAT, UVMAX, DURA-UV



"Optimized with HCLT adhesion, abrasion, yields, and tintability."

COBURN HARD COATINGS

Our coatings are developed with an unsurpassed, inline quality control process and the best raw materials. ProCoat, UVMAX, and DURA-UV are all UV cured, spin-on backside hard coatings. Each coating fulfills the following standards and features:






- Quick UV curing
- Hybrid Cross Linking Technology™
- Excellent adhesion to AR coating
- High abrasion resistance
- High optical clarity, less yellow index
- Unique filtration and purification
- Low viscosity and long life cycle
- Higher yields at a lower cost
- Compatible with standard UV curing systems and bulbs
- No volatile solvents

	ProCoat™	UVMAX™	DURA-UV™
MIN. VOLUME (BOTTLES/MO/UNIT)	1	2	4
ABRASION (TUMBLE SCORE)			
HC	2.1	1.3	1.6
HC + AR	2.6	2.0	2.9
ADHESION (CHOCA 24 HRS)			
HC ONLY			
PC / CR / Trivex	● ● ● ●	● ● ● ●	● ● ● ●
HC + AR			
PC / CR / Trivex	● ● ● ●	● ● ● ●	● ● ● ●
MR7	● ● ● ○	● ● ● ○	● ● ● ○
MR8	● ● ● ○	● ● ● ○	● ● ● ○
MR10	● ● ● ○	● ● ○ ○	● ● ● ○
1.70	● ● ● ○	● ○ ○ ○	● ● ● ○
1.74	● ● ● ●	● ● ● ○	● ● ● ●
TINTABILITY	● ● ● ●	● ● ● ●	● ● ○ ○
APPROVED COATERS	Velocity Velocity LTE MR3 Mini2	Velocity Velocity LTE MR3 Mini2 Simplicity	Velocity Velocity LTE MR3

Results are based on independent third party testing and/or testing by Coburn Technologies, Inc. Adhesion results may vary with different surfacing and cleaning procedures. Abrasion results with AR may vary with different AR designs and processes.

LENS SURFACING LABS

Coburn Technologies provides the most reliable and diverse optical lens labs to fit every need and budget. Our diverse configurations provide a complete solution, with a smaller footprint and price point than all others in their class. Lab formats vary based on capabilities and volume and can be arranged and configured to your lab's specific needs.

Software	Blocker	Generator	Polisher	Coater
 RXPro Lab Management Software	 Spectrum Prismatic Lens Blocker	 NEXUS DGT Digital Lens Generator	 NEXUS DP Digital Lens Polisher	 Velocity Manual Spin Coater

NEXUS FREEFORM LAB

NEXUS is designed to scale seamlessly with your business's specific freeform lens volume needs and can often integrate with your existing lens lab equipment. Step into the next generation of lens processing with NEXUS and experience unparalleled efficiency and adaptability.

 RXPro Lab Management Software	 Spectrum Prismatic Lens Blocker	 Cobalt NX Digital Lens Generator	 Cobalt DP Digital Lens Polisher	 Velocity LTE Spin Coating System
--	---	--	---	--

COBALT FREEFORM LAB

Enter the world of freeform without the prohibitive start-up costs, space requirements and technical complexity. This lab can be scaled to meet the specific volume of your business and can be adapted to work with lens lab equipment you already have.

 RXPro Lab Management Software	 Spectrum Prismatic Lens Blocker	 CTL65 Compact Lens Generator	 Acuity Max Lens Polisher	 Velocity LTE Spin Coating System
--	--	---	---	---

CUT-TO-POLISH LAB

Higher volume conventional lens processing with a two-step polishing process using versatile soft tools, plus UV spin lens coating. Adding the Cut-to-Polish system will enhance the value and production speeds of your lab.

 RXPro Lab Management Software	 Spectrum Prismatic Lens Blocker	 CTL65 Compact Lens Generator	 Acuity Plus Lens Polisher	 Velocity TT Spin Coating System
--	--	---	--	--

PREMIER LAB

A versatile system that combines open architecture design with advanced lens processing equipment. Everything is modular, including the software, that can automate lens processing. Premier Lab is the industry standard for small-format lens surfacing labs.

TECHNICAL CHARACTERISTICS

	NEXUS GENERATOR	COBALT GENERATOR	GENERATOR
	NEXUS	COBALT NX	CTL65
POWER	Single Phase 230V/10A	Single Phase 230V/10A	Single Phase 230V/20A/50/60 Hz
DIMENSIONS	53"W x 30.5"D x 63"H 1346 x 775 x 1600mm	56"W x 36"D x 65"H 1422 x 914 x 1651mm	47"W x 31"D x 51"H 1194 x 787 x 1295mm
WEIGHT	1415lbs/642kg	1415lbs/642kg	1200lbs/544kg
BLOCKING	Pin Style/Acublock/Loh Style	Pin Style/Acublock/Loh Style	Acublock/Pin Style/Loh Style
CURVE RANGE	+7 to -20D	+7 to -20D	+7 to -20D/10 cylinder/10 prism
AIR REQUIREMENT	80-130 PSI @ 10 CFM	80-130 PSI @ 8 CFM	110-120 PSI @ 8 CFM
MORE DETAILS	Cold-Mist Cutting Chamber	Cold-Mist Cutting Chamber	

	SURFACE BLOCKERS			AUTODEBLOCKER		DE-TAPER/CLEANER	
	SPECTRUM ^{PR}	SPECTRUM ^{PL}	SPECTRUM	AGILITY		DUALITY, DUALITY ^{AR}	
POWER	Single Phase 10V/10AMP Single Phase 220V/5AMP	Single Phase 10V/10AMP Single Phase 220V/5AMP	Single Phase 10V/10AMP Single Phase 220V/5AMP	POWER	Single Phase 200-240V, 5A, 50/60HZ (1 outlet)	POWER	Single Phase 220V/25A (2 plugs)
DIMENSIONS	22"W x 23"D x 20"H 559 x 584 x 508 mm	22"W x 23"D x 20"H 559 x 584 x 508 mm	22"W x 23"D x 20"H 559 x 584 x 508 mm	DIMENSIONS	63"W x 42"D x 73"H 1601 x 1069 x 1855mm	DIMENSIONS	85"W x 38"D x 70"H 2159 x 965 x 1778mm
WEIGHT	130lbs/59kg	130lbs/59kg	130lbs/59kg	WEIGHT	722lbs/328kg	WEIGHT	1282lbs/582kg
BLOCKING	Loh Style	Loh Style	Pin Style	THROUGHPUT	Up to 220/hr	THROUGHPUT	120-150/hr
AIR REQUIREMENT	90 PSI @ 3 CFM	90 PSI @ 3 CFM	90 PSI @ 3 CFM	AIR REQUIREMENT	80-100 PSI, 5.5-6.9 bar, 17 SCFM	AIR REQUIREMENT	80 PSI @ 7.6 SCFM
MORE DETAILS	Uses alloy blocking compound	Uses alloy blocking compound	Uses wax blocking compound	MORE DETAILS	All materials except glass. 50-90mm lens diameters. 2mm min. overhang	MORE DETAILS	Available with or without heating (240v) and/or as a wash-only machine

	ALLOY RECOVERY		POLISHERS			
	INTEGRITY		NEXUS DP	COBALT DP	ACUITY MAX	ACUITY PLUS
POWER	Single Phase, 16A, 208-230V, 50/60Hz	POWER	Single Phase 230V/10A 15A. Dedicated circuit terminated by NEMA 6-15P plug.	Single Phase 230V/10A	Single Phase 230V/7.5A/50/60Hz 3-Phase 380V/7.5A/50Hz	Single Phase 230V/7.5A/50/60Hz 3-Phase 380V/7.5A/50Hz
DIMENSIONS	78"W x 55"D x 52"H 1975 x 1392 x 1310mm	DIMENSIONS	38"W x 47"D x 72"H 965 x 1194 x 1829mm	40"W x 40"D x 71"H 1020 x 1020 x 1810mm	18"W x 29"D x 54"H 450 x 735 x 1350mm	18"W x 29"D x 54"H 450 x 735 x 1350mm
WEIGHT	750lbs/340kg	WEIGHT	1000lbs/455kg	1000lbs/455kg	250lbs/113kg	250lbs/113kg
THROUGHPUT	240 pieces/hr	BLOCKING	Acublock/Pin Style	Acublock/Pin Style	Acublock/Pin Style	Acublock/Pin Style
AIR REQUIREMENT	85-100 PSI, 6.9 bar, 1.5 SCFM	CURVE RANGE	0 to -14D/6 cylinder/6 prism	0 to -14D/6 cylinder/6 prism	0 to -10D/6 cylinder/6 prism	0 to -20D/10 cylinder/10 prism
MORE DETAILS	Alloy pucks ready for reuse in any blocker. Blocks neatly collected and stacked.	AIR REQUIREMENT	85-145 PSI @ 10 CFM	85-145 PSI @ 10 CFM	50-125 PSI @ 1 CFM	50-125 PSI @ 1 CFM
		MORE DETAILS	2 spindles with 4-axis control (isolated polishing chambers) Base curve: 0 to 114 diopters Clean Water Supply of 65 PSI @ 17 GPM (min)	2 spindles with 4-axis control (isolated polishing chambers) Base curve: 0 to 114 diopters		

	HARD COATERS		HARD COATERS		HARD COATERS	
	VELOCITY 2 D (AUTO)	VELOCITY 2 D (MANUAL)	VELOCITY 1.5 (AUTO)	VELOCITY (MANUAL)	VELOCITY LTE	VELOCITY TT
POWER	Single Phase 220V/30A/60Hz	Single Phase 220V/30A/60Hz	Single Phase 230V/30A/60Hz	Single Phase 220V/20A/50/60Hz	Single Phase 120V/8A/60Hz	Single Phase 208-240VAC, 20A 50/60Hz
DIMENSIONS	68"W x 57"D x 72"H 1728 x 1448 x 1829mm	43"W x 34"D x 72"H 1039 x 864 x 1829mm	61"W x 61"D x 69"H 1544 x 1545 x 1752mm	34"W x 34"D x 69"H 864 x 864 x 1752mm	37.25"W x 28"D x 70"H 946 x 711 x 1778mm	35"W x 32"D x 30"H 889 x 815 x 762mm
WEIGHT	800-850lbs/363-386kg	600-650lbs/272-295kg	650-700lbs/1433-1543kg	450-500lbs/992-1102kg	573lbs/260kg	280lbs/127kg
THROUGHPUT	Up to 130/hr	Up to 130/hr	Up to 130/hr	Up to 130/hr	Up to 80/hr	40-50/hr
AIR REQUIREMENT	80 PSI One (1) 1/2" line	80 PSI One (1) 1/2" line	80 PSI @ 7.6 SCFM	80 PSI @ 7.6 SCFM	80 PSI @ 7.6 SCFM	80 PSI, 8mm quick disconnect
MORE DETAILS	Available with or without a steamer.		Available with or without a steamer.			

Opti Pro Equipment and Instruments Servicing



 **OPTIPRO**
Optometry • Medical
Sales & Services

Optipro equipment can be a significantly costly investment. You want to make sure that it continues to work well and that you are getting the most out of your purchases.

The best way to protect your investment is to routinely maintain it and get any necessary service to keep it working properly. Even the best kept equipment can have issues that must be addressed.

The first thing on your mind when you experience a problem or a malfunction with your Optic Equipment is finding a cost effective solution that won't break the bank.

Your next course of action is to seek out either replacement or Optipro Repair Services.